

CATALOGUE NO. 8635.5
EMBARGOED UNTIL 11.30 A.M. 22 MARCH 1995

**TOURIST ACCOMMODATION, WESTERN AUSTRALIA
DECEMBER QUARTER 1994**

MAIN FEATURES

DECEMBER QUARTER 1994
COMPARED WITH
DECEMBER QUARTER 1993

HOTELS, MOTELS AND GUEST HOUSES

- Rooms available decreased by 1.3 per cent from 17,749 to 17,516 and bed spaces decreased from 42,961 to 42,882.
- Room nights occupied increased by 7.1 per cent from 858,063 to 918,751 overall with changes by statistical division ranging from a rise of 11.8 per cent for Lower Great Southern SD to a fall of 3.5 per cent for Central SD.
- The room occupancy rate overall rose from 52.5 per cent to 57.0 per cent. Perth SD recorded the highest room occupancy rate at 76.5 per cent, an increase of 6.2 percentage points, followed by South Eastern SD at 56.7 per cent. Midlands SD recorded the lowest room occupancy rate of 28.0 per cent.
- Guest nights increased by 4.8 per cent from 1,415,800 to 1,483,274 and the bed occupancy rate rose from 35.8 per cent to 37.6 per cent.
- Guest arrivals rose by 2.5 per cent from 599,338 to 614,379 and the average length of stay was unchanged at 2.4 days overall.
- Takings from accommodation increased by 15.0 per cent from \$60.1m to \$69.2m while average takings per room night occupied rose from \$70 to \$75 overall, ranging from \$89 for Perth SD to \$45 for Upper Great Southern SD.

HOLIDAY FLATS, UNITS AND HOUSES

- The number of units, etc. available for short-term letting increased by 5.1 per cent from 2,190 to 2,302 while unit nights occupied increased by 13.3 per cent from 113,238 to 128,353.
- The unit occupancy rate rose from 56.2 per cent to 60.6 per cent.
- Unit lettings increased by 15.6 per cent from 25,623 to 29,632 and the average length of stay fell from 4.4 days to 4.3 days.
- Accommodation takings rose by 20.9 per cent from \$6.9m to \$8.4m with the average takings per unit night occupied increasing from \$61 to \$65.

CARAVAN PARKS

- Capacity available increased by 3.6 per cent from 28,592 to 29,625 powered and unpowered sites and cabins, etc.
- Long-term residents occupied 4,957 sites, etc. (16.7 per cent), while 2,305 sites (7.8 per cent) were permanently reserved but only casually occupied by their tenants and an average of 3,643 sites (12.3 per cent) were occupied by other short-term guests.
- Site nights occupied rose by 4.3 per cent from 962,336 to 1,003,272 while the site occupancy rate increased from 36.6 per cent to 36.8 per cent.
- Accommodation takings rose by 8.6 per cent from \$11.0m to \$12.0m.

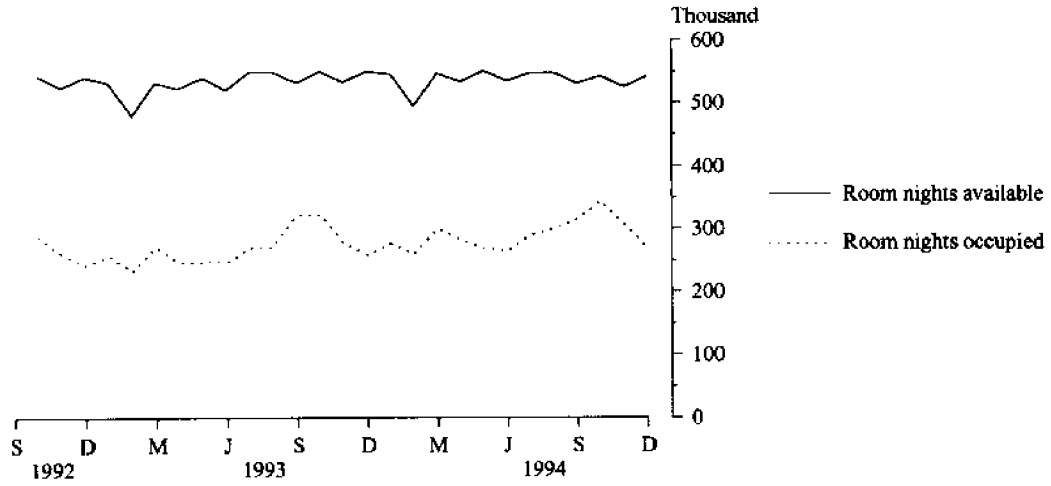
VISITOR HOSTELS

- Bed spaces available fell by 4.5 per cent from 2,993 to 2,858 while guest nights rose by 2.0 per cent from 103,780 to 105,863.
- The bed occupancy rate increased from 37.7 per cent to 40.3 per cent.
- Guest arrivals increased by 5.9 per cent from 37,881 to 40,111 while the average length of stay decreased from 2.7 days to 2.6 days.
- Accommodation takings rose by 10.3 per cent from \$1.1m to \$1.2m at an average of \$11 per guest night.

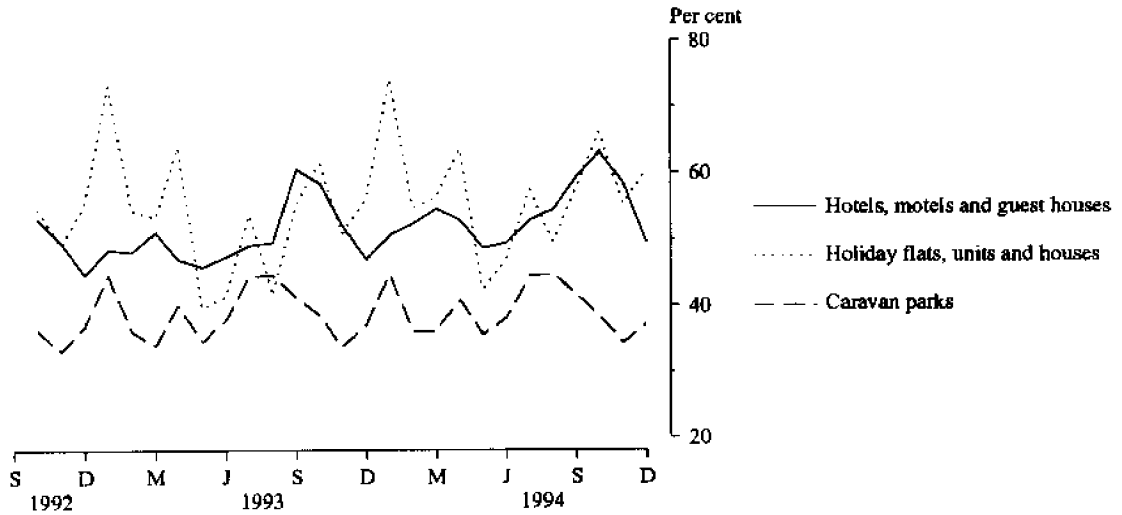
INQUIRIES

- *for further information about statistics in this publication and the availability of related unpublished statistics, contact Brian Hay on 1800 077304 or any ABS office.*
 - *for information about other ABS statistics and services, refer to the back page of this publication.*
- *****

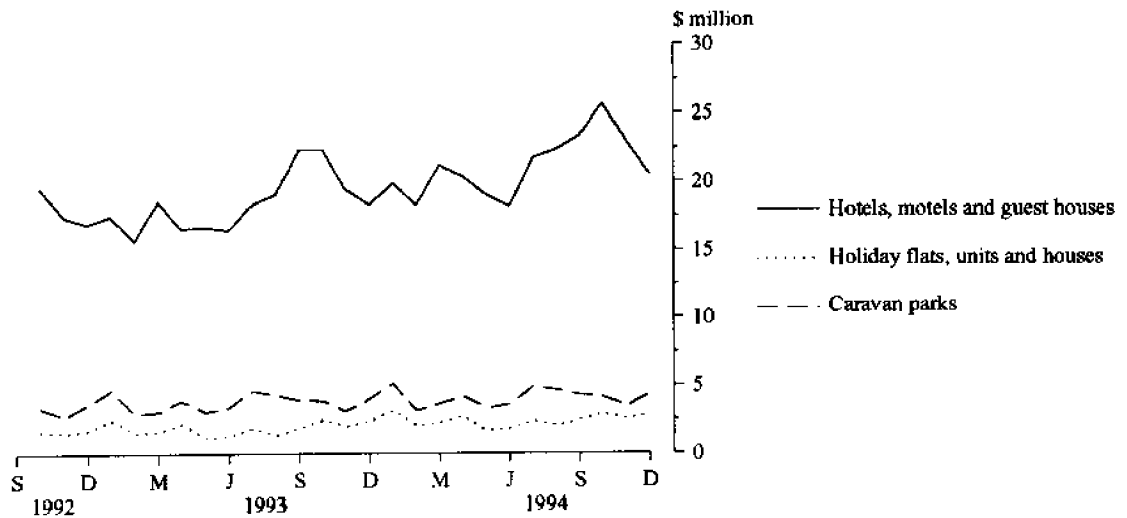
**MONTHLY ROOM NIGHTS AVAILABLE AND OCCUPIED:
HOTELS, MOTELS AND GUEST HOUSES,
WESTERN AUSTRALIA**



**MONTHLY OCCUPANCY RATES,
WESTERN AUSTRALIA**



**MONTHLY TAKINGS FROM ACCOMMODATION,
WESTERN AUSTRALIA**



CONTENTS

<i>Table</i>	<i>Page</i>
" Main features	1
" Diagrams	2
1 Summaries of hotels, motels and guest houses, Perth Statistical Division and Western Australia	4
2 Summary of caravan parks, Perth Statistical Division and Western Australia	6
3 Summary of holiday flats, units and houses, Perth Statistical Division and Western Australia	7
4 Summary of visitor hostels, Western Australia	7
5 Hotels, motels and guest houses with facilities by star grading, Perth Statistical Division and Western Australia	8
" Diagrams	10
6 Hotels, motels and guest houses by statistical division, Western Australia	11
7 Hotels, motels and guest houses with facilities: Statistical divisions and selected statistical local areas, Western Australia	14
8 Holiday flats, units and houses by statistical division, Western Australia	16
9 Holiday flats, units and houses by selected statistical local areas, Western Australia	17
10 Caravan parks: Statistical divisions and selected statistical local areas, Western Australia	18
11 Caravan parks by statistical division, Western Australia	20
12 Visitor hostels by statistical division, Western Australia	23
" Explanatory Notes	24
" Reference map – statistical divisions of Western Australia	27

TABLE 1 — SUMMARIES OF HOTELS, MOTELS AND GUEST HOUSES,
PERTH STATISTICAL DIVISION AND WESTERN AUSTRALIA (a)

Particulars	Unit	Quarter ended				Year ended			
		September 1993	December 1993	March 1994	June 1994	September 1994	December 1994	December 1993	December 1994
PERTH STATISTICAL DIVISION — HOTELS, MOTELS AND GUEST HOUSES WITH FACILITIES									
Establishments	No.	86	87	87	87	87	86
Guest rooms	No.	6,743	6,780	6,776	6,769	6,741	6,711
Bed spaces	No.	17,148	17,236	17,272	17,274	17,197	17,064
Employment (persons)	No.	5,282	5,631	5,589	5,322	5,465	5,601
Room nights occupied	No.	417,375	446,283	444,490	412,984	448,624	478,880	1,639,778	1,784,978
Room occupancy rate	per cent	67.3	71.5	72.9	67.0	72.5	77.7	66.7	72.5
Guest nights	No.	684,608	749,202	746,907	668,383	712,295	782,635	2,723,171	2,910,220
Bed occupancy rate	per cent	43.4	47.2	48.0	42.5	45.1	49.9	43.6	46.4
Guest arrivals	No.	254,243	280,128	261,064	245,078	260,798	286,562	995,405	1,053,502
Average length of stay	days	2.7	2.7	2.9	2.7	2.7	2.7	2.7	2.8
Takings from accommodation	\$'000	34,256	37,660	37,992	34,768	39,459	43,460	134,748	155,679
WESTERN AUSTRALIA — LICENSED HOTELS WITH FACILITIES									
Establishments	No.	160	161	162	161	161	160
Guest rooms	No.	8,118	8,158	8,189	8,185	8,170	8,177
Bed spaces	No.	19,718	19,803	19,893	19,996	20,062	19,964
Employment (persons)	No.	6,768	7,149	7,044	6,836	7,011	7,069
Room nights occupied	No.	441,769	443,800	422,925	420,285	467,545	474,740	1,643,508	1,785,495
Room occupancy rate	per cent	59.2	59.1	57.5	56.4	62.3	63.2	55.6	59.9
Guest nights	No.	686,763	709,306	664,480	640,503	712,154	737,134	2,585,184	2,754,271
Bed occupancy rate	per cent	37.9	38.9	37.2	35.2	38.7	40.2	36.1	37.8
Guest arrivals	No.	313,710	302,729	263,754	268,870	313,198	306,643	1,116,946	1,152,465
Average length of stay	days	2.2	2.3	2.5	2.4	2.3	2.4	2.3	2.4
Takings from accommodation	\$'000	35,537	36,830	36,001	34,832	40,420	42,612	133,064	153,864
WESTERN AUSTRALIA — MOTELS AND GUEST HOUSES WITH FACILITIES									
Establishments	No.	166	167	168	173	173	175
Guest rooms	No.	6,493	6,536	6,531	6,569	6,563	6,557
Bed spaces	No.	17,960	18,199	18,312	18,300	18,278	18,290
Employment (persons)	No.	2,533	2,475	2,550	2,614	2,717	2,558
Room nights occupied	No.	340,477	331,609	330,809	312,732	350,354	354,347	1,269,696	1,348,242
Room occupancy rate	per cent	57.0	55.1	56.3	52.5	58.0	58.7	53.6	56.4
Guest nights	No.	612,053	602,524	623,497	562,493	616,677	635,250	2,303,291	2,437,917
Bed occupancy rate	per cent	37.0	36.0	37.9	33.8	36.7	37.8	35.0	36.5
Guest arrivals	No.	256,066	261,075	253,069	234,575	279,633	272,681	961,513	1,039,958
Average length of stay	days	2.4	2.3	2.5	2.4	2.2	2.3	2.4	2.3
Takings from accommodation	\$'000	21,826	20,763	20,976	20,134	24,060	23,651	79,503	88,821
WESTERN AUSTRALIA — TOTAL HOTELS, MOTELS AND GUEST HOUSES WITH FACILITIES									
Establishments	No.	326	328	330	334	334	335
Guest rooms	No.	14,611	14,694	14,720	14,754	14,733	14,734
Bed spaces	No.	37,678	38,002	38,205	38,296	38,340	38,254
Employment (persons)	No.	9,301	9,624	9,594	9,450	9,728	9,627
Room nights occupied	No.	782,246	775,409	753,734	733,017	817,899	829,087	2,913,204	3,133,737
Room occupancy rate	per cent	58.2	57.4	57.0	54.7	60.4	61.2	54.7	58.3
Guest nights	No.	1,298,816	1,311,830	1,287,977	1,202,996	1,328,831	1,372,384	4,888,475	5,192,188
Bed occupancy rate	per cent	37.5	37.5	37.5	34.5	37.7	39.0	35.6	37.2
Guest arrivals	No.	569,776	563,804	516,823	503,445	592,831	579,324	2,078,459	2,192,423
Average length of stay	days	2.3	2.3	2.5	2.4	2.2	2.4	2.4	2.4
Takings from accommodation	\$'000	57,364	57,593	56,977	54,966	64,480	66,263	212,567	242,685

TABLE 1 — SUMMARIES OF HOTELS, MOTELS AND GUEST HOUSES,
PERTH STATISTICAL DIVISION AND WESTERN AUSTRALIA (a)—continued

Particulars	Unit	Quarter ended				Year ended			
		September 1993	December 1993	March 1994	June 1994	September 1994	December 1994	December 1993	December 1994
PERTH STATISTICAL DIVISION — HOTELS, MOTELS AND GUEST HOUSES WITHOUT FACILITIES									
Establishments	No.	10	9	8	9	9	8
Guest rooms	No.	363	357	338	338	339	313
Bed spaces	No.	566	561	501	532	539	462
Employment (persons)	No.	278	282	268	258	233	221
Room nights occupied	No.	13,994	15,024	16,574	14,528	14,168	14,966	55,105	60,236
Room occupancy rate	per cent	41.9	45.7	54.5	47.2	48.2	52.0	42.9	50.5
Guest nights	No.	17,933	19,242	21,566	17,932	17,478	18,674	71,055	75,650
Bed occupancy rate	per cent	34.4	37.3	47.8	37.0	38.5	43.9	35.6	41.7
Guest arrivals	No.	5,311	5,579	6,106	4,644	4,301	4,831	21,123	19,882
Average length of stay	days	3.4	3.4	3.5	3.9	4.1	3.9	3.4	3.8
Takings from accommodation	\$'000	324	376	393	326	310	355	1,308	1,384
WESTERN AUSTRALIA — HOTELS, MOTELS AND GUEST HOUSES WITHOUT FACILITIES									
Establishments	No.	135	129	128	136	129	129
Guest rooms	No.	3,109	3,055	2,930	3,049	2,990	2,782
Bed spaces	No.	5,024	4,959	4,802	5,061	4,926	4,628
Employment (persons)	No.	1,133	1,023	999	1,023	999	963
Room nights occupied	No.	81,322	82,654	81,035	83,129	86,414	89,664	308,112	340,242
Room occupancy rate	per cent	28.5	29.4	30.7	30.0	31.6	35.0	28.9	31.8
Guest nights	No.	103,023	103,970	106,223	102,549	107,483	110,890	395,992	427,145
Bed occupancy rate	per cent	22.4	22.8	24.6	22.3	24.0	26.0	22.5	24.2
Guest arrivals	No.	36,694	35,534	34,523	32,484	37,492	35,055	138,409	139,554
Average length of stay	days	2.8	2.9	3.1	3.2	2.9	3.2	2.9	3.1
Takings from accommodation	\$'000	2,457	2,550	2,426	2,547	2,885	2,905	8,922	10,763
PERTH STATISTICAL DIVISION — TOTAL HOTELS, MOTELS AND GUEST HOUSES									
Establishments	No.	96	96	95	96	96	94
Guest rooms	No.	7,106	7,137	7,114	7,107	7,080	7,024
Bed spaces	No.	17,714	17,797	17,773	17,806	17,736	17,526
Employment (persons)	No.	5,560	5,913	5,857	5,580	5,698	5,822
Room nights occupied	No.	431,369	461,307	461,064	427,512	462,792	493,846	1,694,883	1,845,214
Room occupancy rate	per cent	66.0	70.3	72.0	66.1	71.4	76.5	65.6	71.5
Guest nights	No.	702,541	768,444	768,473	686,315	729,773	801,309	2,794,226	2,985,870
Bed occupancy rate	per cent	43.1	46.9	48.0	42.4	44.9	49.8	43.4	46.3
Guest arrivals	No.	259,554	285,707	267,170	249,722	265,099	291,393	1,016,528	1,073,384
Average length of stay	days	2.7	2.7	2.9	2.7	2.8	2.7	2.7	2.8
Takings from accommodation	\$'000	34,580	38,036	38,385	35,094	39,769	43,815	136,055	157,063
WESTERN AUSTRALIA — TOTAL HOTELS, MOTELS AND GUEST HOUSES									
Establishments	No.	461	457	458	470	463	464
Guest rooms	No.	17,720	17,749	17,650	17,803	17,723	17,516
Bed spaces	No.	42,702	42,961	43,007	43,357	43,266	42,882
Employment (persons)	No.	10,434	10,647	10,593	10,473	10,727	10,590
Room nights occupied	No.	863,568	858,063	834,769	816,146	904,313	918,751	3,221,316	3,473,979
Room occupancy rate	per cent	53.0	52.5	52.6	50.4	55.6	57.0	50.4	53.9
Guest nights	No.	1,401,839	1,415,800	1,394,200	1,305,545	1,436,314	1,483,274	5,284,467	5,619,333
Bed occupancy rate	per cent	35.7	35.8	36.1	33.1	36.2	37.6	34.1	35.7
Guest arrivals	No.	606,470	599,338	551,346	535,929	630,323	614,379	2,216,868	2,331,977
Average length of stay	days	2.3	2.4	2.5	2.4	2.3	2.4	2.4	2.4
Takings from accommodation	\$'000	59,821	60,143	59,402	57,513	67,365	69,167	221,490	253,448

(a) From December quarter 1993, establishments with fewer than 5 rooms have been formally excluded from the scope of this collection. See Explanatory Note 2 (page 24).

TABLE 2 — SUMMARY OF CARAVAN PARKS, PERTH STATISTICAL DIVISION AND WESTERN AUSTRALIA

Particulars	Quarter ended				Year ended				
	September Unit	December 1993	March 1994	June 1994	September 1994	December 1994	December 1993	December 1994	
PERTH STATISTICAL DIVISION — CARAVAN PARKS									
Establishments	No.	35	35	34	34	34	34
Capacity	No.	442	434	424	429	429	440
On-site vans	No.	2,838	2,881	2,858	2,907	2,912	2,904
Other powered sites	No.	516	446	452	532	508	527
Unpowered sites	No.	170	206	211	219	203	202
Cabins, etc.	No.	3,966	3,967	3,945	4,087	4,052	4,073
Total capacity	No.	3,966	3,967	3,945	4,087	4,052	4,073
Sites occupied by long-term guests	No.	1,695	1,751	1,860	1,859	1,803	1,875
Other sites permanently reserved	No.	175	118	121	108	117	113
Employment (persons)	No.	139	146	144	139	152	147
Site nights occupied	No.	210,318	198,590	210,590	212,456	216,077	226,211	819,028	865,334
Site occupancy rate	per cent	57.6	54.4	59.3	57.1	58.0	60.4	56.5	58.7
Guest arrivals	No.	9,594	8,622	18,162	23,345	12,861	15,016	38,966	69,384
Takings from accommodation	\$'000	2,173	2,309	2,396	2,311	2,538	2,529	8,560	9,774
WESTERN AUSTRALIA — SHORT-TERM CARAVAN PARKS									
Establishments	No.	197	199	198	198	205	207
Capacity	No.	1,144	1,167	1,173	1,166	1,126	1,122
On-site vans	No.	11,468	11,657	11,838	12,024	12,206	12,324
Other powered sites	No.	3,988	4,005	4,018	4,024	4,243	4,039
Unpowered sites	No.	820	838	843	860	870	971
Cabins, etc.	No.	17,420	17,667	17,872	18,074	18,445	18,456
Total capacity	No.	17,420	17,667	17,872	18,074	18,445	18,456
Sites occupied by long-term guests	No.	1,228	1,175	1,221	1,269	1,275	1,224
Other sites permanently reserved	No.	1,914	1,974	1,937	1,981	2,068	2,116
Employment (persons)	No.	665	696	690	711	731	729
Site nights occupied	No.	638,120	514,501	563,264	543,653	673,572	539,873	2,108,826	2,320,362
Site occupancy rate	per cent	40.0	31.7	35.1	33.1	39.7	31.8	34.1	34.9
Guest arrivals	No.	285,641	210,022	262,876	224,308	284,709	217,120	926,281	989,013
Takings from accommodation	\$'000	7,100	5,796	6,665	5,760	7,684	6,481	23,751	26,589
WESTERN AUSTRALIA — LONG-TERM CARAVAN PARKS									
Establishments	No.	117	113	113	113	107	108
Capacity	No.	1,070	1,070	1,087	1,082	1,143	1,173
On-site vans	No.	7,567	7,391	7,413	7,445	7,238	7,309
Other powered sites	No.	1,945	1,900	1,880	2,020	1,963	2,114
Unpowered sites	No.	532	564	565	581	564	573
Cabins, etc.	No.	11,114	10,925	10,945	11,128	10,908	11,169
Total capacity	No.	11,114	10,925	10,945	11,128	10,908	11,169
Sites occupied by long-term guests	No.	3,777	3,698	3,833	3,900	3,798	3,733
Other sites permanently reserved	No.	277	259	273	279	183	189
Employment (persons)	No.	396	388	390	403	395	393
Site nights occupied	No.	502,322	447,835	451,516	472,563	508,256	463,399	1,939,361	1,895,734
Site occupancy rate	per cent	49.1	44.6	45.8	46.7	50.6	45.1	46.4	47.1
Guest arrivals	No.	86,823	49,840	53,746	77,177	90,519	58,590	265,480	280,032
Takings from accommodation	\$'000	5,725	5,245	5,290	5,375	6,256	5,508	21,147	22,429
WESTERN AUSTRALIA — TOTAL CARAVAN PARKS									
Establishments	No.	314	312	311	311	312	315
Capacity	No.	2,214	2,237	2,260	2,248	2,269	2,295
On-site vans	No.	19,035	19,048	19,251	19,469	19,444	19,633
Other powered sites	No.	5,933	5,905	5,898	6,044	6,206	6,153
Unpowered sites	No.	1,352	1,402	1,408	1,441	1,434	1,544
Cabins, etc.	No.	28,534	28,592	28,817	29,202	29,353	29,625
Total capacity	No.	28,534	28,592	28,817	29,202	29,353	29,625
Sites occupied by long-term guests	No.	5,005	4,873	5,054	5,169	5,073	4,957
Other sites permanently reserved	No.	2,191	2,233	2,210	2,260	2,251	2,305
Employment (persons)	No.	1,061	1,084	1,080	1,114	1,126	1,122
Site nights occupied	No.	1,140,442	962,336	1,014,780	1,016,216	1,181,828	1,003,272	4,048,187	4,216,096
Site occupancy rate	per cent	43.5	36.6	39.2	38.2	43.8	36.8	39.0	39.5
Guest arrivals	No.	372,464	259,862	316,622	301,485	375,228	275,710	1,191,761	1,269,045
Takings from accommodation	\$'000	12,825	11,041	11,954	11,135	13,940	11,989	44,898	49,018

TABLE 3 — SUMMARY OF HOLIDAY FLATS, UNITS AND HOUSES,
PERTH STATISTICAL DIVISION AND WESTERN AUSTRALIA

Particulars	Unit	Quarter ended				Year ended					
		September	December	March	June	September	December	December	December		
		1993	1993	1994	1994	1994	1994	1993	1994		
PERTH STATISTICAL DIVISION											
Letting entities	No.	30	30	30	29	29	30		
Flats, units and houses	No.	398	380	383	390	390	427		
Single bedroom	No.	684	700	711	733	748	766		
Multiple bedroom	No.	1,082	1,080	1,094	1,123	1,138	1,193		
Total flats, units and houses	No.	4,386	4,494	4,417	4,632	4,746	4,971		
Bed spaces	No.	204	227	230	224	237	249		
Employment (persons) (a)	No.	55,571	66,855	74,475	60,762	62,782	76,498	234,919	274,517		
Unit nights occupied	No.	55.8	67.3	75.6	59.5	60.0	69.7	62.7	66.1		
Unit occupancy rate	per cent	9,843	12,459	12,688	11,203	11,583	15,015	42,687	50,489		
Unit lettings	No.	5.6	5.4	5.9	5.4	5.4	5.1	5.5	5.4		
Average length of stay	days	\$'000	3,005	4,221	4,589	3,812	3,954	5,233	13,435	17,588	
Takings from accommodation	\$'000	WESTERN AUSTRALIA									
Letting entities	No.	106	107	107	106	106	106		
Flats, units and houses	No.	527	563	558	569	573	604		
Single bedroom	No.	1,570	1,627	1,640	1,655	1,682	1,698		
Multiple bedroom	No.	2,097	2,190	2,198	2,224	2,255	2,302		
Total flats, units and houses	No.	9,874	10,378	10,249	10,501	10,712	10,901		
Bed spaces	No.	440	474	471	485	502	520		
Employment (persons) (a)	No.	96,779	113,238	122,718	103,130	114,012	128,353	401,555	468,213		
Unit nights occupied	No.	50.2	56.2	62.0	51.0	55.0	60.6	53.7	57.1		
Unit occupancy rate	per cent	22,585	25,623	24,606	23,262	26,190	29,632	89,770	103,690		
Unit lettings	No.	4.3	4.4	5.0	4.4	4.4	4.3	4.5	4.5		
Average length of stay	days	\$'000	5,153	6,915	7,584	6,283	6,908	8,357	22,732	29,133	
Takings from accommodation	\$'000	WESTERN AUSTRALIA									

(a) Employment numbers exclude real estate agents and their employees.

TABLE 4 — SUMMARY OF VISITOR HOSTELS, WESTERN AUSTRALIA

Particulars	Unit	Quarter ended				Year ended			
		September	December	March	June	September	December	December	December
		1993	1993	1994	1994	1994	1994	1993	1994
Establishments	No.	52	54	54	57	56	55
Bed spaces	No.	2,841	2,993	3,068	3,119	3,042	2,858
Employment (persons)	No.	146	138	135	150	157	148
Guest nights	No.	96,456	103,780	113,992	102,136	102,400	105,863	399,879	424,391
Bed occupancy rate	per cent	36.9	37.7	41.9	36.0	36.6	40.3	37.3	38.6
Guest arrivals	No.	28,461	37,881	37,941	32,326	35,274	40,111	126,418	145,652
Average length of stay	days	3.4	2.7	3.0	3.2	2.9	2.6	3.2	2.9
Takings from accommodation	\$'000	1,038	1,073	1,228	1,115	1,136	1,183	4,254	4,661

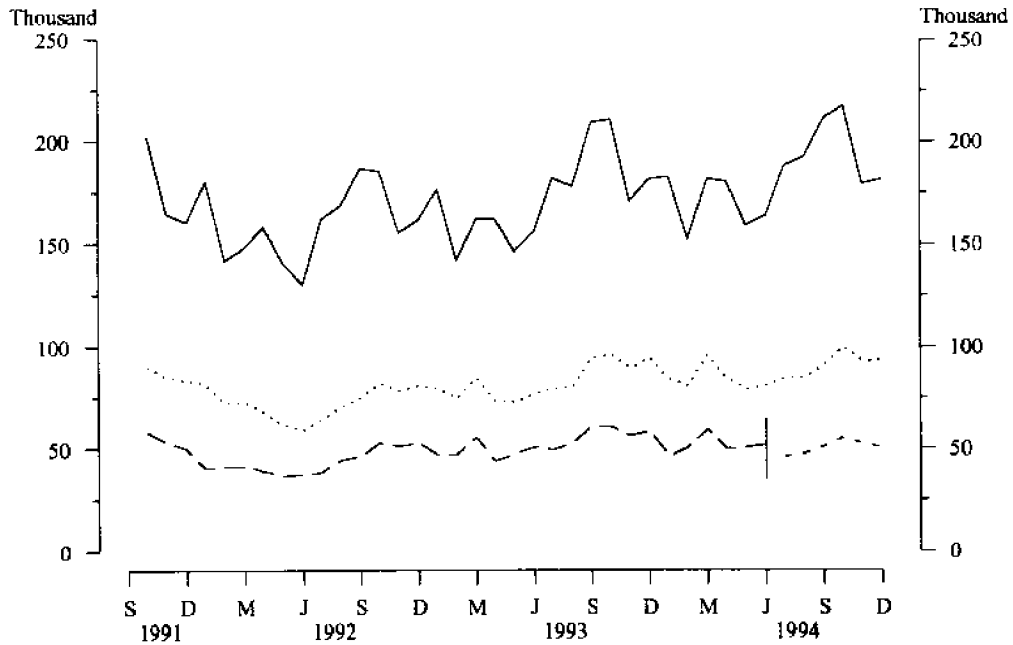
TABLE 5—HOTELS, MOTELS AND GUEST HOUSES WITH FACILITIES BY STAR GRADING,
PERTH STATISTICAL DIVISION AND WESTERN AUSTRALIA

<i>Perth Statistical Division</i>					
<i>Particulars</i>	<i>Star grading</i>				<i>Total</i>
	<i>1 and 2</i>	<i>3</i>	<i>4 and 5</i>	<i>Ungraded</i>	
ESTABLISHMENTS, CAPACITY AND EMPLOYMENT					
<i>December quarter 1993—</i>					
Establishments	26	30	14	17	87
Guest rooms	1,071	2,278	3,039	392	6,780
Bed spaces	2,870	6,146	7,331	889	17,236
Employment (persons)	590	1,315	3,318	408	5,631
<i>December quarter 1994—</i>					
Establishments	33	27	14	12	86
Guest rooms	1,292	2,039	3,047	333	6,711
Bed spaces	3,449	5,501	7,335	779	17,064
Employment (persons)	811	992	3,396	402	5,601
ROOM NIGHTS OCCUPIED					
<i>December quarter 1993</i>	<i>57,042</i>	<i>152,296</i>	<i>216,865</i>	<i>20,080</i>	<i>446,283</i>
<i>1994—</i>					
October	29,671	52,857	82,975	6,370	171,873
November	26,363	49,839	80,729	5,944	162,875
December	23,150	43,433	71,980	5,569	144,132
<i>December quarter 1994</i>	<i>79,184</i>	<i>146,129</i>	<i>235,684</i>	<i>17,883</i>	<i>478,880</i>
ROOM OCCUPANCY RATES (per cent)					
<i>December quarter 1993</i>	<i>57.9</i>	<i>72.7</i>	<i>77.6</i>	<i>55.7</i>	<i>71.5</i>
<i>1994—</i>					
October	74.1	83.6	87.8	61.7	82.6
November	68.0	81.5	88.3	62.2	81.1
December	57.8	68.7	76.2	57.0	69.5
<i>December quarter 1994</i>	<i>66.6</i>	<i>77.9</i>	<i>84.1</i>	<i>60.3</i>	<i>77.7</i>
GUEST NIGHTS					
<i>December quarter 1993</i>	<i>101,492</i>	<i>288,463</i>	<i>329,487</i>	<i>29,760</i>	<i>749,202</i>
<i>1994—</i>					
October	50,819	98,118	121,376	10,019	280,332
November	43,423	86,776	113,852	9,405	253,456
December	41,412	84,801	113,422	9,212	248,847
<i>December quarter 1994</i>	<i>135,654</i>	<i>269,695</i>	<i>348,650</i>	<i>28,636</i>	<i>782,635</i>
BED OCCUPANCY RATES (per cent)					
<i>December quarter 1993</i>	<i>38.4</i>	<i>51.0</i>	<i>48.9</i>	<i>36.4</i>	<i>47.2</i>
<i>1994—</i>					
October	47.5	57.5	53.4	41.5	53.0
November	42.0	52.6	51.7	42.0	49.6
December	38.7	49.7	49.9	40.2	47.2
<i>December quarter 1994</i>	<i>42.8</i>	<i>53.3</i>	<i>51.7</i>	<i>41.2</i>	<i>49.9</i>
GUEST ARRIVALS					
<i>December quarter 1993</i>	<i>39,047</i>	<i>91,083</i>	<i>141,316</i>	<i>8,682</i>	<i>280,128</i>
<i>1994—</i>					
October	21,051	25,719	49,679	3,379	99,828
November	18,672	23,777	47,588	2,906	92,943
December	18,786	24,147	47,866	2,992	93,791
<i>December quarter 1994</i>	<i>58,509</i>	<i>73,643</i>	<i>145,133</i>	<i>9,277</i>	<i>286,562</i>
AVERAGE LENGTH OF STAY (days)					
<i>December quarter 1993</i>	<i>2.6</i>	<i>3.2</i>	<i>2.3</i>	<i>3.4</i>	<i>2.7</i>
<i>December quarter 1994</i>	<i>2.3</i>	<i>3.7</i>	<i>2.4</i>	<i>3.1</i>	<i>2.7</i>
TAKINGS FROM ACCOMMODATION (\$'000)					
<i>December quarter 1993</i>	<i>2,967</i>	<i>9,840</i>	<i>24,122</i>	<i>730</i>	<i>37,660</i>
<i>1994—</i>					
October	1,689	3,666	9,825	267	15,447
November	1,437	3,434	9,748	237	14,856
December	1,302	3,088	8,523	244	13,157
<i>December quarter 1994</i>	<i>4,428</i>	<i>10,188</i>	<i>28,096</i>	<i>748</i>	<i>43,460</i>

TABLE 5—HOTELS, MOTELS AND GUEST HOUSES WITH FACILITIES BY STAR GRADING,
PERTH STATISTICAL DIVISION AND WESTERN AUSTRALIA *continued*

Particulars	Western Australia						Total
	Star grading						
	1	2	3	4	5	Ungraded	
ESTABLISHMENTS, CAPACITY AND EMPLOYMENT							
<i>December quarter 1993—</i>							
Establishments	10	125	112	9	9	63	328
Guest rooms	170	3,614	6,064	879	2,424	1,543	14,694
Bed spaces	372	9,185	16,537	2,295	6,021	3,592	38,002
Employment (persons)	152	1,812	3,076	1,189	2,460	935	9,624
<i>December quarter 1994—</i>							
Establishments	12	134	108	12	8	61	335
Guest rooms	219	3,783	5,906	948	2,376	1,502	14,734
Bed spaces	419	9,580	16,208	2,447	5,871	3,729	38,254
Employment (persons)	136	2,009	2,704	1,280	2,498	1,000	9,627
ROOM NIGHTS OCCUPIED							
<i>December quarter 1993</i>	4,583	155,624	330,607	64,565	166,227	53,803	775,409
<i>1994—</i>							
October	1,696	67,229	128,410	25,045	63,515	23,511	309,406
November	1,659	55,701	113,018	24,523	61,566	19,353	275,820
December	1,659	50,525	97,245	22,261	55,089	17,082	243,861
<i>December quarter 1994</i>	5,014	173,455	338,673	71,829	180,170	59,946	829,087
ROOM OCCUPANCY RATES (per cent)							
<i>December quarter 1993</i>	29.3	46.8	59.3	79.8	74.5	37.9	57.4
<i>1994—</i>							
October	25.0	57.3	70.1	85.2	86.2	50.5	67.7
November	25.3	49.1	63.8	86.2	86.4	43.4	62.5
December	24.4	43.1	53.1	75.7	74.8	37.1	53.5
<i>December quarter 1994</i>	24.9	49.8	62.3	82.4	82.4	43.7	61.2
GUEST NIGHTS							
<i>December quarter 1993</i>	7,291	259,765	598,767	102,116	258,155	83,736	1,311,830
<i>1994—</i>							
October	2,311	113,312	228,628	39,020	93,715	40,809	517,795
November	1,976	86,421	184,672	36,132	88,037	31,146	428,384
December	2,359	88,708	181,881	37,152	87,650	28,455	426,205
<i>December quarter 1994</i>	6,646	288,441	595,181	112,304	269,402	100,410	1,372,384
BED OCCUPANCY RATES (per cent)							
<i>December quarter 1993</i>	21.3	30.7	39.4	48.4	46.6	25.9	37.5
<i>1994—</i>							
October	17.8	38.2	45.5	51.4	51.5	35.3	43.7
November	15.7	30.1	38.0	49.2	50.0	28.1	37.4
December	18.2	29.9	36.2	49.0	48.2	24.9	36.0
<i>December quarter 1994</i>	17.2	32.7	39.9	49.9	49.9	29.5	39.0
GUEST ARRIVALS							
<i>December quarter 1993</i>	3,760	127,479	246,397	38,624	114,573	32,971	563,804
<i>1994—</i>							
October	1,288	55,939	91,117	12,526	40,986	15,833	217,689
November	865	42,467	72,280	11,943	39,714	12,462	179,731
December	1,243	45,658	71,633	11,905	39,492	11,973	181,904
<i>December quarter 1994</i>	3,396	144,064	235,030	36,374	120,192	40,268	579,324
AVERAGE LENGTH OF STAY (days)							
<i>December quarter 1993</i>	1.9	2.0	2.4	2.6	2.3	2.6	2.3
<i>December quarter 1994</i>	2.0	2.0	2.5	3.1	2.2	2.5	2.4
TAKINGS FROM ACCOMMODATION (\$'000)							
<i>December quarter 1993</i>	167	7,818	21,487	6,320	19,278	2,522	57,593
<i>1994—</i>							
October	50	3,659	8,954	2,675	7,786	1,447	24,571
November	43	2,927	7,733	2,673	7,621	992	21,989
December	46	2,772	6,879	2,403	6,761	842	19,703
<i>December quarter 1994</i>	139	9,358	23,565	7,751	22,168	3,281	66,263

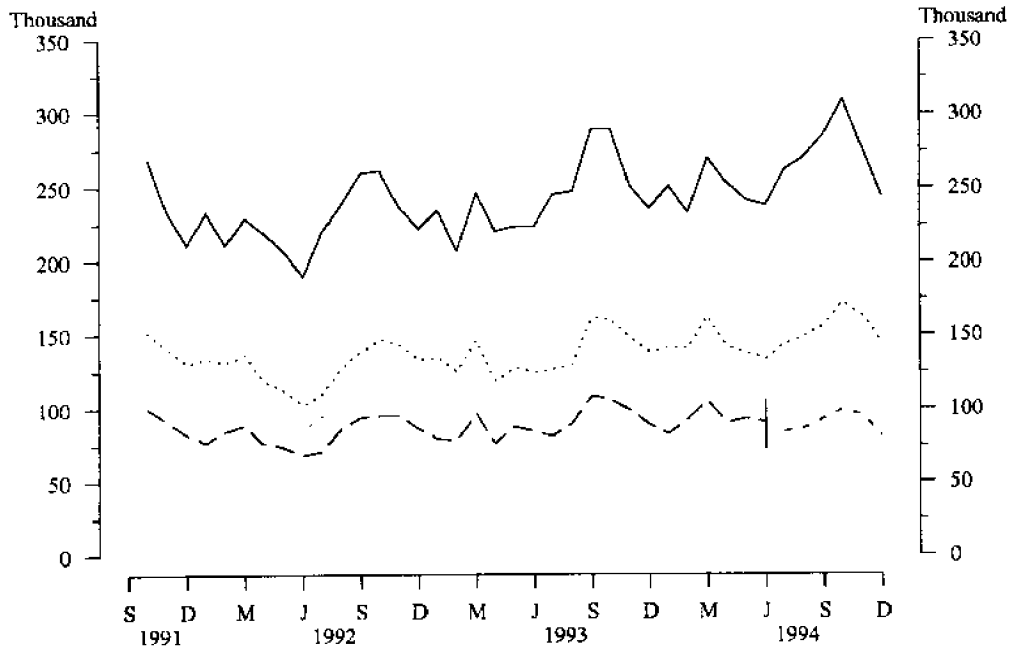
**MONTHLY GUEST ARRIVALS,
HOTELS, MOTELS AND GUEST HOUSES WITH FACILITIES**



(a) From 1 July 1994, the area of Perth City has been reduced with the creation of the new towns of Cambridge, Shepperton and Vincent.

- Western Australia
- Perth Statistical Division
- Perth City (a)
- Perth City (a)

**MONTHLY ROOM NIGHTS OCCUPIED,
HOTELS, MOTELS AND GUEST HOUSES WITH FACILITIES**



(a) From 1 July 1994, the area of Perth City has been reduced with the creation of the new towns of Cambridge, Shepperton and Vincent.

- Western Australia
- Perth Statistical Division
- Perth City (a)
- Perth City (a)

TABLE 6 — HOTELS, MOTELS AND GUEST HOUSES BY STATISTICAL DIVISION,
WESTERN AUSTRALIA

Particulars	Perth (SD)			South-West (SD)			Lower Great Southern (SD)			Total		
	Establishments with facilities		Estab. without facilities	Establishments with facilities		Estab. without facilities	Establishments with facilities		Estab. without facilities			
	Licensed hotels	Motels, etc.		Licensed hotels	Motels, etc.		Licensed hotels	Motels, etc.				
ESTABLISHMENTS, CAPACITY AND EMPLOYMENT												
<i>December quarter 1993—</i>												
Establishments	46	41	9	96	25	43	29	97	5	18	20	43
Guest rooms	4,338	2,442	357	7,137	815	1,298	374	2,487	151	565	294	1,010
Bed spaces	10,531	6,705	561	17,797	2,142	3,944	745	6,831	343	1,561	550	2,454
Employment (persons)	4,547	1,084	282	5,913	824	488	200	1,512	129	165	130	424
<i>December quarter 1994</i>												
Establishments	45	41	8	94	25	48	26	99	5	18	21	44
Guest rooms	4,321	2,390	313	7,024	811	1,313	336	2,460	149	567	275	991
Bed spaces	10,457	6,607	462	17,526	2,161	3,969	676	6,806	326	1,589	492	2,407
Employment (persons)	4,570	1,031	221	5,822	814	544	202	1,560	131	162	126	419
ROOM NIGHTS OCCUPIED												
<i>December quarter 1993</i>	291,106	155,177	15,024	461,307	30,088	59,393	10,244	99,725	5,426	22,610	6,749	34,785
<i>1994 —</i>												
October	111,698	60,175	4,708	176,581	12,171	24,218	3,391	39,780	2,053	10,641	2,803	15,497
November	107,462	55,413	5,337	168,212	11,601	20,745	3,116	35,462	1,738	7,785	2,228	11,751
December	95,656	48,476	4,921	149,053	11,546	19,581	2,839	33,966	1,804	7,610	2,234	11,648
<i>December quarter 1994</i>	314,816	164,064	14,966	493,846	35,318	64,544	9,346	109,208	5,595	26,036	7,265	38,896
ROOM OCCUPANCY RATES (per cent)												
<i>December quarter 1993</i>	72.9	69.1	45.7	70.3	40.1	49.7	29.8	43.6	39.1	43.5	25.0	37.4
<i>1994 —</i>												
October	83.4	81.2	48.5	81.1	48.4	59.5	32.6	52.2	44.4	60.5	32.9	50.4
November	83.2	77.3	56.8	80.0	47.7	52.7	30.9	48.1	38.9	45.8	27.0	39.5
December	71.7	65.4	50.7	68.6	45.9	48.1	27.3	44.5	39.1	43.3	26.2	37.9
<i>December quarter 1994</i>	79.4	74.6	52.0	76.5	47.3	53.4	30.2	48.3	40.8	49.9	28.7	42.7
GUEST NIGHTS												
<i>December quarter 1993</i>	473,335	275,867	19,242	768,444	53,364	128,718	16,883	198,965	9,675	41,441	9,866	60,982
<i>1994</i>												
October	171,170	109,162	5,996	286,328	23,082	49,893	5,484	78,459	3,567	19,445	4,468	27,480
November	158,877	94,579	6,494	259,950	19,206	39,475	4,909	63,590	2,928	12,939	3,340	19,207
December	159,085	89,762	6,184	255,031	22,456	42,191	4,676	69,323	3,397	15,312	3,474	22,183
<i>December quarter 1994</i>	489,132	293,503	18,674	801,309	64,744	131,559	15,069	211,372	9,892	47,696	11,282	68,870
BED OCCUPANCY RATES (per cent)												
<i>December quarter 1993</i>	48.9	44.7	37.3	46.9	27.1	35.5	24.6	31.7	30.7	28.9	19.5	27.0
<i>1994</i>												
October	52.8	53.3	41.9	52.7	34.5	40.6	26.2	37.2	35.3	39.5	29.3	36.8
November	50.8	47.7	46.9	49.5	29.6	33.2	24.2	31.1	29.9	27.1	22.6	26.6
December	49.3	43.8	43.2	47.0	33.5	34.3	22.3	32.9	33.6	31.1	22.8	29.7
<i>December quarter 1994</i>	51.0	48.3	43.9	49.8	32.6	36.0	24.2	33.8	33.0	32.6	24.9	31.1
GUEST ARRIVALS												
<i>December quarter 1993</i>	185,615	94,513	5,579	285,707	28,103	62,871	7,608	98,582	6,684	25,405	5,794	37,883
<i>1994 —</i>												
October	64,970	34,858	1,600	101,428	10,463	24,122	2,829	37,414	1,518	11,730	2,205	15,453
November	61,975	30,968	1,679	94,622	8,602	20,536	2,480	31,618	1,461	7,972	1,713	11,146
December	62,588	31,203	1,552	95,343	9,489	19,229	2,354	31,072	1,520	9,308	1,836	12,664
<i>December quarter 1994</i>	189,533	97,029	4,831	291,393	28,554	63,887	7,663	100,104	4,499	29,010	5,754	39,263
AVERAGE LENGTH OF STAY (days)												
<i>December quarter 1993</i>	2.6	2.9	3.4	2.7	1.9	2.0	2.2	2.0	1.4	1.6	1.7	1.6
<i>December quarter 1994</i>	2.6	3.0	3.9	2.7	2.3	2.1	2.0	2.1	2.2	1.6	2.0	1.8
TAKINGS FROM ACCOMMODATION (\$'000)												
<i>December quarter 1993</i>	27,948	9,711	376	38,036	1,735	3,950	314	6,000	455	1,223	211	1,890
<i>1994 —</i>												
October	11,435	4,012	118	15,565	751	1,703	104	2,558	184	579	79	841
November	11,239	3,617	120	14,976	690	1,388	89	2,167	152	399	65	616
December	9,930	3,227	118	13,274	754	1,517	87	2,357	174	434	66	675
<i>December quarter 1994</i>	32,605	10,855	355	43,815	2,196	4,607	281	7,083	511	1,412	210	2,132

TABLE 6—HOTELS, MOTELS AND GUEST HOUSES BY STATISTICAL DIVISION,
WESTERN AUSTRALIA—continued

Particulars	Upper Great Southern (SD)				Midlands (SD)				South-Eastern (SD)			
	Establishments with facilities			Total	Establishments with facilities			Total	Establishments with facilities			Total
	Licensed hotels	Motels, etc.	Estabs. without facilities		Licensed hotels	Motels, etc.	Estabs. without facilities		Licensed hotels	Motels, etc.	Estabs. without facilities	
ESTABLISHMENTS, CAPACITY AND EMPLOYMENT												
December quarter 1993												
Establishments	4	11	8	23	16	13	28	57	18	17	13	48
Guest rooms	n.p.	n.p.	110	357	326	259	469	1,054	592	574	523	1,689
Bed spaces	n.p.	n.p.	186	754	718	656	839	2,213	1,484	1,575	720	3,779
Employment (persons)	n.p.	n.p.	43	130	212	77	146	435	381	224	64	669
December quarter 1994—												
Establishments	3	10	7	20	15	14	29	58	18	19	13	50
Guest rooms	n.p.	n.p.	84	320	306	272	497	1,075	n.p.	n.p.	458	1,655
Bed spaces	n.p.	n.p.	147	695	714	696	887	2,297	n.p.	n.p.	674	3,840
Employment (persons)	n.p.	n.p.	25	119	191	82	154	427	n.p.	n.p.	70	624
ROOM NIGHTS OCCUPIED												
December quarter 1993	n.p.	n.p.	1,378	9,903	9,764	8,448	6,993	25,205	27,485	30,278	25,074	82,837
1994—												
October	n.p.	n.p.	440	4,012	3,160	4,316	4,179	11,655	n.p.	n.p.	9,625	33,699
November	n.p.	n.p.	348	3,188	2,695	3,393	3,089	9,177	n.p.	n.p.	8,827	27,960
December	n.p.	n.p.	450	2,540	2,442	2,224	2,222	6,888	n.p.	n.p.	6,926	24,696
December quarter 1994	n.p.	n.p.	1,238	9,740	8,297	9,933	9,490	27,720	n.p.	n.p.	25,378	86,355
ROOM OCCUPANCY RATES (per cent)												
December quarter 1993	n.p.	n.p.	13.6	30.2	32.6	35.5	16.2	26.0	50.5	57.3	52.1	53.3
1994—												
October	n.p.	n.p.	16.9	40.4	33.3	51.2	27.1	35.0	n.p.	n.p.	67.8	65.7
November	n.p.	n.p.	13.8	33.2	29.4	41.6	20.7	28.5	n.p.	n.p.	64.2	56.3
December	n.p.	n.p.	17.3	25.6	25.7	26.4	14.4	20.7	n.p.	n.p.	48.8	48.1
December quarter 1994	n.p.	n.p.	16.0	33.1	29.5	39.7	20.8	28.0	n.p.	n.p.	60.2	56.7
GUEST NIGHTS												
December quarter 1993	n.p.	n.p.	2,062	15,486	13,850	13,817	9,560	37,227	42,292	50,033	27,317	119,642
1994												
October	n.p.	n.p.	681	6,243	4,656	6,537	5,698	16,891	n.p.	n.p.	10,442	49,349
November	n.p.	n.p.	433	4,438	3,635	4,649	3,742	12,026	n.p.	n.p.	9,383	36,709
December	n.p.	n.p.	581	3,729	3,756	3,656	2,870	10,282	n.p.	n.p.	7,711	37,064
December quarter 1994	n.p.	n.p.	1,695	14,410	12,047	14,842	12,310	39,199	n.p.	n.p.	27,536	123,122
BED OCCUPANCY RATES (per cent)												
December quarter 1993	n.p.	n.p.	12.1	22.3	21.0	22.9	12.4	18.3	31.0	34.5	41.2	34.4
1994—												
October	n.p.	n.p.	14.9	29.0	21.0	30.3	20.7	23.7	n.p.	n.p.	50.0	41.5
November	n.p.	n.p.	9.8	21.3	17.0	22.3	14.1	17.5	n.p.	n.p.	46.4	31.9
December	n.p.	n.p.	12.7	17.3	17.0	16.9	10.4	14.4	n.p.	n.p.	36.9	31.1
December quarter 1994	n.p.	n.p.	12.5	22.5	18.3	23.2	15.1	18.5	n.p.	n.p.	44.4	34.9
GUEST ARRIVALS												
December quarter 1993	n.p.	n.p.	1,264	11,736	7,978	10,058	6,364	24,400	21,376	23,975	4,331	49,682
1994—												
October	n.p.	n.p.	431	4,742	3,166	4,618	3,102	10,886	n.p.	n.p.	1,485	21,263
November	n.p.	n.p.	332	3,374	2,281	3,087	1,996	7,364	n.p.	n.p.	1,283	15,498
December	n.p.	n.p.	346	3,139	2,486	2,413	1,572	6,471	n.p.	n.p.	1,372	17,572
December quarter 1994	n.p.	n.p.	1,109	11,255	7,933	10,118	6,670	24,721	n.p.	n.p.	4,140	54,333
AVERAGE LENGTH OF STAY (days)												
December quarter 1993	n.p.	n.p.	1.6	1.3	1.7	1.4	1.5	1.5	2.0	2.1	6.3	2.4
December quarter 1994	n.p.	n.p.	1.5	1.3	1.5	1.5	1.8	1.6	n.p.	n.p.	6.7	2.3
TAKINGS FROM ACCOMMODATION (\$'000)												
December quarter 1993	n.p.	n.p.	61	442	437	449	209	1,095	1,647	1,907	834	4,389
1994												
October	n.p.	n.p.	18	177	176	222	141	539	n.p.	n.p.	401	1,952
November	n.p.	n.p.	10	139	134	195	93	422	n.p.	n.p.	379	1,563
December	n.p.	n.p.	18	118	126	124	71	322	n.p.	n.p.	291	1,405
December quarter 1994	n.p.	n.p.	45	435	436	541	305	1,282	n.p.	n.p.	1,070	4,920

TABLE 6—HOTELS, MOTELS AND GUEST HOUSES BY STATISTICAL DIVISION,
WESTERN AUSTRALIA *continued*

Particulars	Central (SD)			Pilbara (SD) and Kimberley (SD)				Western Australia				
	Establishments with facilities			Establishments with facilities				Establishments with facilities				
	Licensed hotels	Motels etc.	Estab. without facilities	Total	Licensed hotels	Motels etc.	without facilities	Total	Licensed hotels	Motels etc.	without facilities	Total
ESTABLISHMENTS, CAPACITY AND EMPLOYMENT												
<i>December quarter 1993—</i>												
Establishments	22	13	14	49	25	11	8	44	161	167	129	457
Guest rooms	716	428	240	1,384	n.p.	n.p.	688	2,631	8,158	6,536	3,055	17,749
Bed spaces	1,691	1,268	485	3,444	n.p.	n.p.	873	5,689	19,803	18,199	4,959	42,961
Employment (persons)	322	163	78	563	n.p.	n.p.	80	1,001	7,149	2,475	1,023	10,647
<i>December quarter 1994—</i>												
Establishments	23	13	15	51	26	12	10	48	160	175	129	464
Guest rooms	757	430	259	1,446	1,163	822	560	2,545	8,177	6,557	2,782	17,516
Bed spaces	1,820	1,245	507	3,572	2,837	2,119	783	5,739	19,964	18,290	4,628	42,882
Employment (persons)	329	157	76	562	651	317	89	1,057	7,069	2,558	963	10,590
ROOM NIGHTS OCCUPIED												
<i>December quarter 1993</i>	28,048	18,215	3,074	49,337	n.p.	n.p.	14,118	94,964	443,800	331,609	82,654	858,063
<i>1994—</i>												
October	11,295	7,020	1,520	19,835	19,418	15,595	7,336	42,349	172,312	137,094	34,002	343,408
November	8,770	4,459	1,355	14,584	18,105	11,681	6,387	36,173	160,144	115,676	30,687	306,507
December	8,128	4,190	868	13,186	13,665	8,679	4,515	26,859	142,284	101,577	24,975	268,836
<i>December quarter 1994</i>	28,193	15,669	3,743	47,605	51,188	35,955	18,238	105,381	474,740	354,347	89,664	918,751
ROOM OCCUPANCY RATES (per cent)												
<i>December quarter 1993</i>	42.6	46.3	13.9	38.7	n.p.	n.p.	22.3	39.2	59.1	55.1	29.4	52.5
<i>1994—</i>												
October	48.1	52.7	18.9	44.2	53.9	61.2	42.3	53.7	68.0	67.4	39.4	63.2
November	38.6	34.6	17.4	33.6	51.9	47.4	38.0	47.4	65.4	58.8	36.8	58.4
December	34.6	31.4	10.8	29.4	37.9	34.1	26.0	34.0	56.3	50.0	29.0	49.6
<i>December quarter 1994</i>	40.5	39.6	15.7	35.8	47.8	47.5	35.4	45.0	63.2	58.7	35.0	57.0
GUEST NIGHTS												
<i>December quarter 1993</i>	45,957	33,563	4,121	83,641	n.p.	n.p.	14,919	131,413	709,306	602,524	103,970	1,415,800
<i>1994—</i>												
October	18,661	13,225	2,113	33,999	27,361	26,567	7,604	61,532	268,153	249,642	42,486	560,281
November	12,598	7,249	1,777	21,624	23,333	17,585	6,828	47,746	234,010	194,374	36,906	465,290
December	12,681	8,630	1,237	22,548	19,131	13,647	4,765	37,543	234,971	191,234	31,498	457,703
<i>December quarter 1994</i>	43,940	29,104	5,127	78,171	69,825	57,799	19,197	146,821	737,134	635,250	110,890	1,483,274
BED OCCUPANCY RATES (per cent)												
<i>December quarter 1993</i>	29.5	28.8	9.2	26.4	n.p.	n.p.	18.6	25.1	38.9	36.0	22.8	35.8
<i>1994—</i>												
October	33.1	34.3	13.4	30.7	31.1	40.4	31.3	34.6	43.3	44.0	29.6	42.1
November	23.1	19.4	11.7	20.2	27.4	27.7	29.1	27.7	39.1	35.4	26.6	36.2
December	22.5	22.4	7.9	20.4	21.8	20.8	19.6	21.1	38.0	33.7	22.0	34.5
<i>December quarter 1994</i>	26.2	25.4	11.0	23.8	26.8	29.6	26.6	27.8	40.2	37.8	26.0	37.6
GUEST ARRIVALS												
<i>December quarter 1993</i>	20,083	21,161	2,521	43,765	n.p.	n.p.	2,073	47,583	302,729	261,075	35,534	599,338
<i>1994—</i>												
October	9,228	9,940	1,186	20,354	11,274	7,713	915	19,902	111,246	106,443	13,753	231,442
November	5,934	5,156	938	12,028	8,866	5,636	520	15,022	96,301	83,430	10,941	190,672
December	6,792	5,998	759	13,549	7,199	4,686	570	12,455	99,096	82,808	10,361	192,265
<i>December quarter 1994</i>	21,954	21,094	2,883	45,931	27,339	18,035	2,005	47,379	306,643	272,681	35,055	614,379
AVERAGE LENGTH OF STAY (days)												
<i>December quarter 1993</i>	2.3	1.6	1.6	1.9	n.p.	n.p.	7.2	2.8	2.3	2.3	2.9	2.4
<i>December quarter 1994</i>	2.0	1.4	1.8	1.7	2.6	3.2	9.6	3.1	2.4	2.3	3.2	2.4
TAKINGS FROM ACCOMMODATION (\$'000)												
<i>December quarter 1993</i>	1,451	1,062	100	2,613	n.p.	n.p.	443	5,678	36,830	20,763	2,550	60,143
<i>1994—</i>												
October	597	435	63	1,096	1,364	1,402	215	2,981	15,293	9,278	1,139	25,710
November	466	267	60	794	1,208	920	138	2,266	14,487	7,501	954	22,943
December	417	270	34	721	880	635	127	1,642	12,831	6,871	812	20,515
<i>December quarter 1994</i>	1,481	972	158	2,610	3,453	2,956	480	6,889	42,612	23,651	2,905	69,167

AND SELECTED STATISTICAL LOCAL AREAS, WESTERN AUSTRALIA, DECEMBER QUARTER 1994

<i>Guest nights</i>				<i>Guest arrivals</i>				<i>Takings from accommodation (\$'000)</i>			
<i>Oct.</i>	<i>Nov.</i>	<i>Dec.</i>	<i>Dec. qtr</i>	<i>Oct.</i>	<i>Nov.</i>	<i>Dec.</i>	<i>Dec. qtr</i>	<i>Oct.</i>	<i>Nov.</i>	<i>Dec.</i>	<i>Dec. qtr</i>
28,925	24,492	25,353	78,770	12,709	10,539	11,856	35,104	886	811	781	2,479
15,601	14,802	17,325	47,728	5,118	5,261	5,909	16,288	959	987	1,054	3,000
75,022	71,511	67,911	214,444	28,977	27,454	26,127	82,558	4,142	4,024	3,253	11,419
78,253	70,827	67,367	216,447	26,375	24,755	23,952	75,082	4,789	4,682	4,007	13,478
153,275	142,338	135,278	430,891	55,352	52,209	50,079	157,640	8,931	8,706	7,260	24,897
3,280	2,455	3,222	8,957	689	726	894	2,309	123	81	95	300
15,646	12,787	11,685	40,118	5,036	4,207	4,421	13,664	563	509	417	1,488
24,177	20,422	20,877	65,476	7,658	7,325	7,952	22,935	1,390	1,232	1,219	3,841
2,538	2,210	2,114	6,862	1,316	1,254	1,006	3,576	98	99	88	285
36,890	33,950	32,993	103,833	11,950	11,422	11,674	35,046	2,496	2,431	2,243	7,169
280,332	253,456	248,847	782,635	99,828	92,943	93,791	286,562	15,447	14,856	13,157	43,460
8,645	7,537	7,528	23,710	6,332	5,150	4,758	16,240	306	281	285	872
16,743	13,782	14,414	44,939	8,510	7,314	7,798	23,622	612	505	525	1,642
21,483	17,417	22,755	61,655	8,162	7,058	7,860	23,080	694	589	772	2,055
1,969	1,906	1,171	5,046	902	874	436	2,212	61	66	36	164
8,902	7,057	7,402	23,361	2,420	2,174	2,293	6,887	276	235	267	777
12,049	8,352	8,773	29,174	6,172	4,853	3,821	14,846	407	313	305	1,025
3,184	2,630	2,604	8,418	2,087	1,715	1,752	5,554	99	88	80	268
72,975	58,681	64,647	196,303	34,585	29,138	28,718	92,441	2,454	2,078	2,270	6,803
18,789	13,109	15,709	47,607	10,708	7,425	8,819	26,952	639	465	526	1,630
985	732	1,079	2,796	817	667	930	2,414	31	24	33	88
3,238	2,026	1,921	7,185	1,723	1,341	1,079	4,143	92	62	50	204
23,012	15,867	18,709	57,588	13,248	9,433	10,828	33,509	763	551	608	1,922
1,409	1,252	831	3,492	852	825	728	2,405	48	46	36	130
4,153	2,753	2,317	9,223	3,459	2,217	2,065	7,741	112	83	65	260
5,562	4,005	3,148	12,715	4,311	3,042	2,793	10,146	160	129	101	390
2,502	1,849	1,941	6,292	2,070	1,499	1,339	4,908	73	57	56	186
626	489	316	1,431	518	393	255	1,166	21	17	12	50
2,661	1,909	1,285	5,855	1,497	960	869	3,326	80	84	37	200
2,731	2,000	2,017	6,748	1,782	1,239	1,308	4,329	110	85	70	265
1,295	810	742	2,847	1,071	538	544	2,153	58	39	36	134
1,378	1,227	1,111	3,716	846	739	584	2,169	55	48	39	142
11,193	8,284	7,412	26,889	7,784	5,368	4,899	18,051	398	329	250	977
5,119	2,614	5,640	13,373	4,968	2,479	5,428	12,875	165	92	174	430
10,179	6,989	8,224	25,392	5,757	4,001	3,908	13,666	295	219	240	755
20,321	15,320	12,916	48,557	7,519	6,617	5,719	19,855	954	763	591	2,308
1,116	684	947	2,747	801	489	575	1,865	22	15	21	59
2,172	1,719	1,626	5,517	733	629	570	1,932	115	95	88	299
38,907	27,326	29,353	95,586	19,778	14,215	16,200	50,193	1,552	1,184	1,114	3,850
6,686	4,319	4,396	15,401	3,821	2,539	3,043	9,403	207	149	134	490
12,933	8,558	8,551	30,042	8,489	5,001	5,227	18,717	390	312	278	979
2,046	750	1,207	4,003	1,561	626	591	2,778	79	27	39	145
2,280	1,162	1,804	5,246	1,713	881	1,364	3,958	104	58	80	243
7,941	5,058	5,353	18,352	3,584	2,043	2,565	8,192	253	187	155	596
31,886	19,847	21,311	73,044	19,168	11,090	12,790	43,048	1,032	733	687	2,452
6,596	6,011	5,320	17,927	2,572	1,990	1,584	6,146	304	324	266	894
6,099	5,917	5,442	17,458	2,562	2,353	2,008	6,923	340	337	288	964
8,633	5,861	4,119	18,613	3,038	2,286	1,904	7,228	603	450	270	1,323
21,328	17,789	14,881	53,998	8,172	6,629	5,496	20,297	1,247	1,111	824	3,182
22,742	15,165	12,478	50,385	5,663	4,299	3,571	13,533	1,014	613	453	2,080
2,825	2,688	1,411	6,924	1,472	1,067	760	3,299	135	126	72	333
7,033	5,276	4,008	16,317	3,680	2,507	2,058	8,245	370	278	166	813
32,600	23,129	17,897	73,626	10,815	7,873	6,389	25,077	1,519	1,016	691	3,227
517,795	428,384	426,205	1,372,384	217,689	179,731	181,904	579,324	24,571	21,989	19,703	66,263

TABLE 8 — HOLIDAY FLATS, UNITS AND HOUSES BY STATISTICAL DIVISION, WESTERN AUSTRALIA

Particulars	Perth (SD)	South-West (SD)	Lower Great		Upper Great	Midlands (SD)	South- Eastern (SD)	Central (SD)	Pilbara and Kimberley		Western Australia
			Southern (SD)	Southern (SD)	(SDs)				(SDs)		
LETTING ENTITIES, CAPACITY AND EMPLOYMENT											
<i>December quarter 1993—</i>											
Letting entities	30	27	12	—	7	4	25	2	107		
Flats, units and houses											
Single bedroom	380	32	20	—	13	n.p.	50	n.p.	563		
Multiple bedroom	700	314	98	—	49	n.p.	429	n.p.	1,627		
<i>Total flats, units and houses</i>	<i>1,080</i>	<i>346</i>	<i>118</i>	<i>—</i>	<i>62</i>	<i>n.p.</i>	<i>479</i>	<i>n.p.</i>	<i>2,190</i>		
Bed spaces	4,494	2,124	629	—	299	n.p.	2,445	n.p.	10,378		
Employment (persons) (a)	227	109	29	—	10	n.p.	76	n.p.	474		
<i>December quarter 1994—</i>											
Letting entities	30	27	12	—	7	4	24	2	106		
Flats, units and houses											
Single bedroom	427	32	20	—	12	n.p.	56	n.p.	604		
Multiple bedroom	766	312	98	—	48	n.p.	411	n.p.	1,698		
<i>Total flats, units and houses</i>	<i>1,193</i>	<i>344</i>	<i>118</i>	<i>—</i>	<i>60</i>	<i>n.p.</i>	<i>467</i>	<i>n.p.</i>	<i>2,302</i>		
Bed spaces	4,971	2,116	624	—	300	n.p.	2,447	n.p.	10,901		
Employment (persons) (a)	249	130	33	—	11	n.p.	78	n.p.	520		
UNIT NIGHTS OCCUPIED											
<i>December quarter 1993</i>	<i>66,855</i>	<i>14,912</i>	<i>4,710</i>	<i>—</i>	<i>1,888</i>	<i>n.p.</i>	<i>21,378</i>	<i>n.p.</i>	<i>113,238</i>		
<i>1994—</i>											
October	26,366	6,120	2,058	—	644	n.p.	9,699	n.p.	47,183		
November	24,323	4,382	1,334	—	600	n.p.	5,679	n.p.	38,174		
December	25,809	5,870	1,843	—	828	n.p.	6,445	n.p.	42,996		
<i>December quarter 1994</i>	<i>76,498</i>	<i>16,372</i>	<i>5,235</i>	<i>—</i>	<i>2,072</i>	<i>n.p.</i>	<i>21,823</i>	<i>n.p.</i>	<i>128,353</i>		
UNIT OCCUPANCY RATES (per cent)											
<i>December quarter 1993</i>	<i>67.3</i>	<i>46.8</i>	<i>43.4</i>	<i>—</i>	<i>33.1</i>	<i>n.p.</i>	<i>48.5</i>	<i>n.p.</i>	<i>56.2</i>		
<i>1994</i>											
October	71.3	57.4	56.3	—	34.6	n.p.	67.0	n.p.	66.1		
November	68.0	42.5	37.7	—	33.3	n.p.	40.5	n.p.	55.3		
December	69.8	55.0	50.4	—	44.5	n.p.	44.5	n.p.	60.3		
<i>December quarter 1994</i>	<i>69.7</i>	<i>51.7</i>	<i>48.2</i>	<i>—</i>	<i>37.5</i>	<i>n.p.</i>	<i>50.8</i>	<i>n.p.</i>	<i>60.6</i>		
UNIT LETTINGS											
<i>December quarter 1993</i>	<i>12,459</i>	<i>5,016</i>	<i>1,513</i>	<i>—</i>	<i>617</i>	<i>n.p.</i>	<i>4,948</i>	<i>n.p.</i>	<i>25,623</i>		
<i>1994</i>											
October	4,822	1,954	710	—	200	n.p.	2,286	n.p.	10,504		
November	5,074	1,727	474	—	187	n.p.	1,511	n.p.	9,401		
December	5,119	1,780	519	—	218	n.p.	1,602	n.p.	9,727		
<i>December quarter 1994</i>	<i>15,015</i>	<i>5,461</i>	<i>1,703</i>	<i>—</i>	<i>605</i>	<i>n.p.</i>	<i>5,399</i>	<i>n.p.</i>	<i>29,632</i>		
AVERAGE LENGTH OF STAY (days)											
<i>December quarter 1993</i>	<i>5.4</i>	<i>3.0</i>	<i>3.1</i>	<i>—</i>	<i>3.1</i>	<i>n.p.</i>	<i>4.3</i>	<i>n.p.</i>	<i>4.4</i>		
<i>1994—</i>											
October	5.5	3.1	2.9	—	3.2	n.p.	4.2	n.p.	4.5		
November	4.8	2.5	2.8	—	3.2	n.p.	3.8	n.p.	4.1		
December	5.0	3.3	3.6	—	3.8	n.p.	4.0	n.p.	4.4		
<i>December quarter 1994</i>	<i>5.1</i>	<i>3.0</i>	<i>3.1</i>	<i>—</i>	<i>3.4</i>	<i>n.p.</i>	<i>4.0</i>	<i>n.p.</i>	<i>4.3</i>		
TAKINGS FROM ACCOMMODATION (\$'000)											
<i>December quarter 1993</i>	<i>4,221</i>	<i>953</i>	<i>273</i>	<i>—</i>	<i>79</i>	<i>n.p.</i>	<i>1,178</i>	<i>n.p.</i>	<i>6,915</i>		
<i>1994—</i>											
October	1,711	368	125	—	23	n.p.	532	n.p.	2,914		
November	1,675	294	83	—	22	n.p.	321	n.p.	2,519		
December	1,848	401	118	—	33	n.p.	400	n.p.	2,924		
<i>December quarter 1994</i>	<i>5,233</i>	<i>1,064</i>	<i>326</i>	<i>—</i>	<i>77</i>	<i>n.p.</i>	<i>1,253</i>	<i>n.p.</i>	<i>8,357</i>		

(a) Employment numbers exclude real estate agents and their employees.

TABLE 9 — HOLIDAY FLATS, UNITS AND HOUSES BY SELECTED STATISTICAL LOCAL AREAS,
WESTERN AUSTRALIA

Particulars	Rottnest Island (a)	Belmont (C)	Perth (C) (b) (c)	Stirling (C) (c)	Albany (S) and Albany (T)	Augusta- Margaret River (S)	Busselton (S)	Gingin (S)	Northampton (S)
LETTING ENTITIES, CAPACITY AND EMPLOYMENT									
<i>December quarter 1993—</i>									
Letting entities	1	4	5	6	7	6	9	4	12
Flats, units and houses									
Single bedroom	15	52	206	21	5	2	20	12	6
Multiple bedroom	232	61	4	80	67	38	132	18	281
<i>Total flats, units and houses</i>	<i>247</i>	<i>113</i>	<i>210</i>	<i>101</i>	<i>72</i>	<i>40</i>	<i>152</i>	<i>30</i>	<i>287</i>
Bed spaces	1,180	433	656	465	370	217	786	131	1,611
Employment (persons) (d)	98	16	24	25	18	18	55	6	46
<i>December quarter 1994—</i>									
Letting entities	1	4	4	5	7	6	9	4	12
Flats, units and houses									
Single bedroom	15	64	186	22	5	2	20	11	7
Multiple bedroom	232	63	4	122	67	38	134	17	275
<i>Total flats, units and houses</i>	<i>247</i>	<i>127</i>	<i>190</i>	<i>144</i>	<i>72</i>	<i>40</i>	<i>154</i>	<i>28</i>	<i>282</i>
Bed spaces	1,180	462	570	709	372	217	800	132	1,560
Employment (persons) (d)	106	21	25	24	23	22	68	7	49
UNIT NIGHTS OCCUPIED									
<i>December quarter 1993</i>	<i>18,881</i>	<i>6,343</i>	<i>12,006</i>	<i>5,067</i>	<i>3,636</i>	<i>2,306</i>	<i>6,714</i>	<i>684</i>	<i>13,690</i>
<i>1994—</i>									
October	5,906	3,318	4,592	2,751	1,640	918	2,816	240	6,171
November	5,538	2,912	3,954	2,726	1,118	709	2,213	229	3,734
December	7,127	2,632	3,493	3,093	1,407	784	3,118	404	4,192
<i>December quarter 1994</i>	<i>18,571</i>	<i>8,862</i>	<i>12,039</i>	<i>8,570</i>	<i>4,165</i>	<i>2,411</i>	<i>8,147</i>	<i>873</i>	<i>14,097</i>
UNIT OCCUPANCY RATES (per cent)									
<i>December quarter 1993</i>	<i>83.1</i>	<i>61.0</i>	<i>62.1</i>	<i>54.5</i>	<i>54.9</i>	<i>62.7</i>	<i>48.0</i>	<i>24.8</i>	<i>51.8</i>
<i>1994—</i>									
October	77.1	84.3	78.0	61.6	73.5	74.0	59.0	27.6	70.6
November	74.7	76.4	69.4	63.1	51.8	59.1	47.9	27.3	44.1
December	93.1	66.9	59.3	69.3	63.0	63.2	65.3	46.5	48.0
<i>December quarter 1994</i>	<i>81.7</i>	<i>75.8</i>	<i>68.9</i>	<i>64.7</i>	<i>62.9</i>	<i>65.5</i>	<i>57.5</i>	<i>33.9</i>	<i>54.3</i>
UNIT LETTINGS									
<i>December quarter 1993</i>	<i>3,658</i>	<i>1,426</i>	<i>2,761</i>	<i>1,027</i>	<i>1,190</i>	<i>901</i>	<i>2,190</i>	<i>234</i>	<i>3,102</i>
<i>1994—</i>									
October	1,018	720	854	524	581	344	897	70	1,356
November	1,251	740	765	570	396	330	850	67	937
December	1,434	723	751	603	413	285	851	102	997
<i>December quarter 1994</i>	<i>3,703</i>	<i>2,183</i>	<i>2,370</i>	<i>1,697</i>	<i>1,390</i>	<i>959</i>	<i>2,598</i>	<i>239</i>	<i>3,290</i>
AVERAGE LENGTH OF STAY (days)									
<i>December quarter 1993</i>	<i>5.2</i>	<i>4.4</i>	<i>4.3</i>	<i>4.9</i>	<i>3.1</i>	<i>2.6</i>	<i>3.1</i>	<i>2.9</i>	<i>4.4</i>
<i>1994—</i>									
October	5.8	4.6	5.4	5.3	2.8	2.7	3.1	3.4	4.6
November	4.4	3.9	5.2	4.8	2.8	2.1	2.6	3.4	4.0
December	5.0	3.6	4.7	5.1	3.4	2.8	3.7	4.0	4.2
<i>December quarter 1994</i>	<i>5.0</i>	<i>4.1</i>	<i>5.1</i>	<i>5.1</i>	<i>3.0</i>	<i>2.5</i>	<i>3.1</i>	<i>3.7</i>	<i>4.3</i>
TAKINGS FROM ACCOMMODATION (\$'000)									
<i>December quarter 1993</i>	<i>1,131</i>	<i>265</i>	<i>582</i>	<i>400</i>	<i>227</i>	<i>136</i>	<i>474</i>	<i>25</i>	<i>817</i>
<i>1994—</i>									
October	356	137	216	247	108	53	201	8	360
November	397	124	189	249	74	40	162	9	219
December	402	116	176	394	98	45	239	15	279
<i>December quarter 1994</i>	<i>1,154</i>	<i>377</i>	<i>581</i>	<i>890</i>	<i>280</i>	<i>137</i>	<i>601</i>	<i>33</i>	<i>858</i>

(a) Unincorporated area. (b) With effect from 1 July 1994, the area of Perth City has been reduced with the creation of the new towns of Cambridge, Shepperton and Vincent.
(c) See paragraph 22 of Explanatory Notes. (d) Employment numbers exclude real estate agents and their employees.

TABLE 10—CARAVAN PARKS: STATISTICAL DIVISIONS AND SELECTED

Statistical Divisions and Selected Statistical Local Areas	Capacity					Total	Sites occupied by long-term guests	Other sites permanently reserved	Employment (persons)
	Establishments	On-site vans	Other powered sites	Unpowered sites	Cabins, flats, etc.				
Kalamunda (S)	3	46	252	40	21	359	193		13
Rockingham (C)	4	25	473	43	—	541	258	63	14
Stirling (C) (a)	3	36	185	43	20	284	140	—	11
Swan (S)	4	99	439	73	27	638	240	2	24
Wanneroo (C)	7	108	523	67	7	705	377	37	32
Balance	13	126	1,032	261	127	1,546	667	11	53
<i>Perth (SD)</i>	<i>34</i>	<i>440</i>	<i>2,904</i>	<i>527</i>	<i>202</i>	<i>4,073</i>	<i>1,875</i>	<i>113</i>	<i>147</i>
Augusta-Margaret River (S)	10	96	708	379	14	1,197	36	87	35
Bunbury (C)	3	49	314	94	40	497	119	13	16
Busseton (S)	16	125	1,404	237	199	1,965	160	367	93
Harvey (S)	7	35	318	117	34	504	35	124	16
Mandurah (C)	9	79	864	102	26	1,071	192	437	47
Manjimup (S)	8	71	351	147	23	592	32	5	31
Murray (S)	7	48	510	60	28	646	152	286	26
Waroona (S)	4	17	188	230	14	449	13	31	14
Balance	10	86	322	144	17	569	109	18	21
<i>South West (SD)</i>	<i>74</i>	<i>606</i>	<i>4,979</i>	<i>1,510</i>	<i>395</i>	<i>7,490</i>	<i>848</i>	<i>1,368</i>	<i>299</i>
Albany (S) and Albany (T)	12	133	829	506	62	1,530	140	106	51
Denmark (S)	4	36	262	163	22	483	10	12	17
Balance	11	68	413	228	18	727	64	90	31
<i>Lower Great Southern (SD)</i>	<i>27</i>	<i>237</i>	<i>1,504</i>	<i>897</i>	<i>102</i>	<i>2,740</i>	<i>214</i>	<i>208</i>	<i>99</i>
<i>Upper Great Southern (SD)</i>	<i>17</i>	<i>13</i>	<i>308</i>	<i>166</i>	<i>12</i>	<i>499</i>	<i>16</i>	<i>6</i>	<i>27</i>
Gingin (S)	6	21	376	106	10	513	2	174	18
Balance	33	85	783	335	26	1,229	114	100	50
<i>Midlands (SD)</i>	<i>39</i>	<i>106</i>	<i>1,159</i>	<i>441</i>	<i>36</i>	<i>1,742</i>	<i>116</i>	<i>274</i>	<i>68</i>
Esperance (S)	7	62	468	66	29	625	72	77	28
Kalgoorlie-Boulder (C)	7	84	454	119	158	815	496	6	36
Balance	13	43	598	290	20	951	206	40	30
<i>South Eastern (SD)</i>	<i>27</i>	<i>189</i>	<i>1,520</i>	<i>475</i>	<i>207</i>	<i>2,391</i>	<i>774</i>	<i>123</i>	<i>94</i>
Carnarvon (S)	9	88	906	115	48	1,157	104	16	35
Exmouth (S)	5	51	792	34	53	930	16	7	18
Geraldton (C) and Greenough (S)	7	131	697	206	63	1,097	180	22	40
Irwin (S)	5	39	228	20	38	325	14	29	11
Northampton (S)	7	47	468	222	57	794	30	30	30
Shark Bay (S)	5	29	350	29	77	485	19	2	52
Balance	17	34	475	283	34	826	85	86	36
<i>Central (SD)</i>	<i>55</i>	<i>419</i>	<i>3,916</i>	<i>909</i>	<i>370</i>	<i>5,614</i>	<i>448</i>	<i>192</i>	<i>222</i>
Ashburton (S)	6	32	285	155	20	492	32	10	14
East Pilbara (S) and Port Hedland (T)	8	94	735	183	90	1,102	191	6	40
Roebourne (S)	7	54	644	62	51	811	164	4	36
<i>Pilbara (SD)</i>	<i>21</i>	<i>180</i>	<i>1,664</i>	<i>400</i>	<i>161</i>	<i>2,405</i>	<i>387</i>	<i>20</i>	<i>90</i>
Broome (S)	7	60	822	196	33	1,111	129	1	39
Wyndham—East Kimberley (S)	7	20	521	260	11	812	113	—	25
Balance	7	25	336	372	15	748	37	—	12
<i>Kimberley (SD)</i>	<i>21</i>	<i>105</i>	<i>1,679</i>	<i>828</i>	<i>59</i>	<i>2,671</i>	<i>279</i>	<i>1</i>	<i>76</i>
<i>Western Australia</i>									
Short-term parks	207	1,122	12,324	4,039	971	18,456	1,224	2,116	729
Long-term parks	108	1,173	7,309	2,114	573	11,169	3,733	189	393
Total	315	2,295	19,633	6,153	1,544	29,625	4,957	2,305	1,122

(a) See paragraph 22 of Explanatory Notes.

STATISTICAL LOCAL AREAS, WESTERN AUSTRALIA, DECEMBER QUARTER 1994

<i>Site nights occupied</i>				<i>Site occupancy rates (per cent)</i>				<i>Guest arrivals</i>				<i>Takings from accommodation (\$'000)</i>			
<i>Oct.</i>	<i>Nov.</i>	<i>Dec.</i>	<i>Dec. qtr</i>	<i>Oct.</i>	<i>Nov.</i>	<i>Dec.</i>	<i>Dec. qtr</i>	<i>Oct.</i>	<i>Nov.</i>	<i>Dec.</i>	<i>Dec. qtr</i>	<i>Oct.</i>	<i>Nov.</i>	<i>Dec.</i>	<i>Dec. qtr</i>
6,526	6,820	7,184	20,530	58.6	63.3	64.6	62.2	83	98	110	291	57	63	65	185
10,312	9,954	10,387	30,653	61.5	61.3	61.9	61.6	209	135	212	556	75	79	72	225
6,419	5,735	6,424	18,578	72.9	67.3	73.0	71.1	664	536	854	2,054	69	87	107	263
10,638	9,186	9,995	29,819	53.8	48.0	50.5	50.8	931	533	1,136	2,600	156	138	150	444
14,884	13,939	15,092	43,915	68.1	65.9	69.1	67.7	1,094	839	1,013	2,946	162	145	171	478
27,707	25,326	29,683	82,716	57.8	54.6	61.9	58.2	1,966	1,989	2,614	6,569	307	291	337	934
76,486	70,960	78,765	226,211	60.6	58.1	62.4	60.4	4,947	4,130	5,939	15,016	826	801	902	2,529
7,057	7,446	15,027	29,530	19.0	20.7	40.5	26.8	5,291	5,261	11,976	22,528	82	90	211	382
5,972	5,448	5,757	17,177	38.8	36.5	37.4	37.6	1,247	981	1,003	3,231	81	73	98	252
26,706	24,971	30,417	82,094	43.8	42.4	49.9	45.4	8,559	6,613	13,401	28,573	328	288	622	1,238
5,367	5,307	6,215	16,889	34.4	35.1	39.8	36.4	924	648	1,717	3,289	36	44	55	135
20,626	20,067	21,308	62,001	62.1	62.5	64.2	62.9	1,562	1,459	2,455	5,476	130	136	204	471
4,378	3,342	4,552	12,272	23.9	18.8	24.8	22.5	3,619	2,662	3,633	9,914	63	48	70	180
14,054	13,972	14,765	42,791	70.2	72.1	73.7	72.0	436	409	861	1,706	86	80	90	256
2,153	2,048	2,608	6,809	15.5	15.2	18.7	16.5	962	604	1,824	3,390	18	15	32	65
5,744	5,834	5,923	17,501	32.6	34.2	33.6	33.4	2,000	1,442	1,933	5,375	56	54	65	175
92,057	88,435	106,572	287,064	39.6	39.4	45.9	41.7	24,600	20,079	38,803	83,482	880	828	1,447	3,155
13,487	11,841	14,924	40,252	28.4	25.8	31.5	28.6	5,459	4,634	7,330	17,423	195	158	239	592
1,951	1,725	4,980	8,656	13.0	11.9	33.3	19.5	1,380	1,108	4,277	6,765	25	20	70	115
7,906	7,545	8,997	24,448	35.1	34.6	39.9	36.6	3,889	2,074	2,810	8,773	87	78	90	256
23,344	21,111	28,901	73,356	27.5	25.7	34.0	29.1	10,728	7,816	14,417	32,961	307	256	399	962
2,808	1,948	1,783	6,539	18.2	13.0	11.5	14.2	2,952	1,490	1,480	5,922	37	19	20	75
7,693	6,608	8,532	22,833	48.4	42.9	53.7	48.4	2,610	2,024	3,486	8,120	51	38	73	162
11,653	9,924	10,583	32,160	30.6	26.9	27.8	28.4	4,566	2,656	3,503	10,725	111	85	92	288
19,346	16,532	19,115	54,993	35.8	31.6	35.4	34.3	7,176	4,680	6,989	18,845	162	123	165	450
9,637	8,060	10,290	27,987	49.7	43.0	53.1	48.7	4,191	2,908	4,388	11,487	128	106	138	373
19,870	17,858	17,785	55,513	78.6	73.0	70.4	74.0	2,765	1,797	1,888	6,450	263	257	233	752
11,106	9,855	10,461	31,422	37.7	34.5	35.5	35.9	4,400	2,748	3,771	10,919	114	96	105	314
40,613	35,773	38,536	114,922	54.8	49.9	52.0	52.2	11,356	7,453	10,047	28,856	505	459	476	1,439
11,919	7,765	7,439	27,123	33.2	22.4	20.7	25.5	7,516	3,116	3,516	14,148	171	104	115	391
3,912	2,283	2,285	8,480	13.6	8.2	7.9	9.9	1,586	726	773	3,085	63	41	41	146
12,498	9,763	11,116	33,377	36.8	29.7	32.7	33.1	5,939	3,908	3,732	13,579	153	114	137	404
3,980	2,914	3,635	10,529	39.5	29.9	36.1	35.2	1,849	622	1,284	3,755	50	36	47	133
10,410	5,206	5,681	21,297	42.3	21.9	23.1	29.2	5,600	2,647	3,239	11,486	116	59	81	256
5,947	2,872	3,458	12,277	39.6	19.7	23.0	27.5	6,154	3,106	4,336	13,596	212	115	142	469
7,248	6,860	7,127	21,235	28.3	27.7	27.8	27.9	2,094	1,125	809	4,028	65	47	47	159
55,914	37,663	40,741	134,318	32.1	22.4	23.4	26.0	30,738	15,250	17,689	63,677	832	516	610	1,958
3,348	2,550	2,024	7,922	22.0	17.3	13.3	17.5	1,867	641	510	3,018	40	27	20	88
9,404	7,826	6,796	24,026	27.5	23.7	19.9	23.7	1,771	905	596	3,272	144	120	96	360
7,077	6,679	6,427	20,183	28.1	27.5	25.6	27.1	2,323	1,197	811	4,331	111	90	87	288
19,829	17,055	15,247	52,131	26.6	23.6	20.5	23.6	5,961	2,743	1,917	10,621	295	238	204	737
13,295	9,511	7,014	29,820	38.6	28.5	20.4	29.2	3,435	1,794	1,093	6,322	186	127	93	407
7,637	5,760	4,321	17,718	30.3	23.6	17.2	23.7	2,330	1,558	767	4,655	83	63	44	190
2,623	1,991	1,586	6,200	11.3	8.9	6.8	9.0	3,088	1,366	899	5,353	35	32	18	85
23,555	17,262	12,921	53,738	28.4	21.5	15.6	21.9	8,853	4,718	2,759	16,330	305	222	155	682
191,337	160,309	188,227	539,873	33.4	29.0	32.9	31.8	83,345	52,761	81,014	217,120	2,224	1,718	2,539	6,481
162,615	146,430	154,354	463,399	47.0	43.7	44.6	45.1	23,966	15,598	19,026	58,590	1,924	1,743	1,840	5,508
353,952	306,739	342,581	1,003,272	38.5	34.5	37.3	36.8	107,311	68,359	100,040	275,710	4,148	3,462	4,379	11,989

TABLE 11 — CARAVAN PARKS BY STATISTICAL DIVISION, WESTERN AUSTRALIA

Particulars	Perth (SD)			South-West (SD)			Lower Great Southern (SD)		
	Short-term	Long-term	Total	Short-term	Long-term	Total	Short-term	Long-term	Total
ESTABLISHMENTS, CAPACITY AND EMPLOYMENT									
<i>December quarter 1993</i>									
Establishments	7	28	35	56	18	74	17	9	26
Capacity									
On-site vans	86	348	434	437	174	611	116	109	225
Other powered sites	383	2,498	2,881	3,872	970	4,842	1,169	406	1,575
Unpowered sites	114	332	446	1,063	318	1,381	470	243	713
Cabins, flats, etc.	22	184	206	270	66	336	65	36	101
<i>Total capacity</i>	<i>605</i>	<i>3,362</i>	<i>3,967</i>	<i>5,642</i>	<i>1,528</i>	<i>7,170</i>	<i>1,820</i>	<i>794</i>	<i>2,614</i>
Sites occupied by long-term guests	139	1,612	1,751	419	424	843	73	121	194
Other sites permanently reserved	84	34	118	1,169	132	1,301	198	41	239
Employment (persons)	21	125	146	220	59	279	61	25	86
<i>December quarter 1994</i>									
Establishments	4	30	34	59	15	74	20	7	27
Capacity									
On-site vans	n.p.	n.p.	440	405	201	606	157	80	237
Other powered sites	n.p.	n.p.	2,904	4,165	814	4,979	1,128	376	1,504
Unpowered sites	n.p.	n.p.	527	1,240	270	1,510	545	352	897
Cabins, flats, etc.	n.p.	n.p.	202	327	68	395	80	22	102
<i>Total capacity</i>	<i>n.p.</i>	<i>n.p.</i>	<i>4,073</i>	<i>6,137</i>	<i>1,353</i>	<i>7,490</i>	<i>1,910</i>	<i>830</i>	<i>2,740</i>
Sites occupied by long-term guests	n.p.	n.p.	1,875	475	373	848	107	107	214
Other sites permanently reserved	n.p.	n.p.	113	1,316	52	1,368	168	40	208
Employment (persons)	n.p.	n.p.	147	246	53	299	75	24	99
SITE NIGHTS OCCUPIED									
<i>December quarter 1993</i>	<i>23,774</i>	<i>174,816</i>	<i>198,590</i>	<i>214,586</i>	<i>64,875</i>	<i>279,461</i>	<i>52,784</i>	<i>20,644</i>	<i>73,428</i>
<i>1994—</i>									
October	n.p.	n.p.	76,486	74,826	17,231	92,057	17,389	5,955	23,344
November	n.p.	n.p.	70,960	71,626	16,809	88,435	15,381	5,730	21,111
December	n.p.	n.p.	78,765	88,860	17,712	106,572	22,263	6,638	28,901
<i>December quarter 1994</i>	<i>n.p.</i>	<i>n.p.</i>	<i>226,211</i>	<i>235,312</i>	<i>51,752</i>	<i>287,064</i>	<i>55,033</i>	<i>18,323</i>	<i>73,356</i>
SITE OCCUPANCY RATES (per cent)									
<i>December quarter 1993</i>	<i>42.7</i>	<i>56.5</i>	<i>54.4</i>	<i>41.3</i>	<i>46.1</i>	<i>42.4</i>	<i>31.5</i>	<i>28.3</i>	<i>30.5</i>
<i>1994—</i>									
October	n.p.	n.p.	60.6	39.3	41.1	39.6	29.4	23.1	27.5
November	n.p.	n.p.	58.1	38.9	41.4	39.4	26.8	23.0	25.7
December	n.p.	n.p.	62.4	46.7	42.2	45.9	37.6	25.8	34.0
<i>December quarter 1994</i>	<i>n.p.</i>	<i>n.p.</i>	<i>60.4</i>	<i>41.7</i>	<i>41.6</i>	<i>41.7</i>	<i>31.3</i>	<i>24.0</i>	<i>29.1</i>
GUEST ARRIVALS									
<i>December quarter 1993</i>	<i>1,227</i>	<i>7,395</i>	<i>8,622</i>	<i>64,292</i>	<i>7,999</i>	<i>72,291</i>	<i>23,866</i>	<i>5,291</i>	<i>29,157</i>
<i>1994—</i>									
October	n.p.	n.p.	4,947	21,819	2,781	24,600	9,249	1,479	10,728
November	n.p.	n.p.	4,130	18,161	1,918	20,079	6,788	1,028	7,816
December	n.p.	n.p.	5,939	36,185	2,618	38,803	12,068	2,349	14,417
<i>December quarter 1994</i>	<i>n.p.</i>	<i>n.p.</i>	<i>15,016</i>	<i>76,165</i>	<i>7,317</i>	<i>83,482</i>	<i>28,105</i>	<i>4,856</i>	<i>32,961</i>
TAKINGS FROM ACCOMMODATION (\$'000)									
<i>December quarter 1993</i>	<i>213</i>	<i>2,096</i>	<i>2,309</i>	<i>2,112</i>	<i>654</i>	<i>2,767</i>	<i>666</i>	<i>294</i>	<i>960</i>
<i>1994—</i>									
October	n.p.	n.p.	826	680	200	880	231	76	307
November	n.p.	n.p.	801	644	184	828	190	66	256
December	n.p.	n.p.	902	1,224	223	1,447	315	84	399
<i>December quarter 1994</i>	<i>n.p.</i>	<i>n.p.</i>	<i>2,529</i>	<i>2,548</i>	<i>607</i>	<i>3,155</i>	<i>736</i>	<i>227</i>	<i>962</i>

TABLE 11 — CARAVAN PARKS BY STATISTICAL DIVISION, WESTERN AUSTRALIA—continued

Particulars	Upper Great Southern (SD)			Midlands (SD)			South-Eastern (SD)		
	Short-term	Long-term	Total	Short-term	Long-term	Total	Short-term	Long-term	Total
ESTABLISHMENTS, CAPACITY AND EMPLOYMENT									
<i>December quarter 1993—</i>									
Establishments	13	4	17	25	14	39	12	15	27
Capacity									
On-site vans	9	1	10	61	27	88	58	127	185
Other powered sites	226	74	300	914	252	1,166	602	897	1,499
Unpowered sites	144	22	166	339	125	464	268	244	512
Cabins, flats, etc.	18		18	20	4	24	42	168	210
<i>Total capacity</i>	<i>397</i>	<i>97</i>	<i>494</i>	<i>1,334</i>	<i>408</i>	<i>1,742</i>	<i>970</i>	<i>1,436</i>	<i>2,406</i>
Sites occupied by long-term guests	15	6	21	51	86	137	47	740	787
Other sites permanently reserved	1		1	275	8	283	110	13	123
Employment (persons)	18	5	23	57	19	76	43	43	86
<i>December quarter 1994—</i>									
Establishments	14	3	17	27	12	39	12	15	27
Capacity									
On-site vans	n.p.	n.p.	13	69	37	106	61	128	189
Other powered sites	n.p.	n.p.	308	930	229	1,159	626	894	1,520
Unpowered sites	n.p.	n.p.	166	300	141	441	272	203	475
Cabins, flats, etc.	n.p.	n.p.	12	31	5	36	43	164	207
<i>Total capacity</i>	<i>n.p.</i>	<i>n.p.</i>	<i>499</i>	<i>1,330</i>	<i>412</i>	<i>1,742</i>	<i>1,002</i>	<i>1,389</i>	<i>2,391</i>
Sites occupied by long-term guests	n.p.	n.p.	16	33	83	116	55	719	774
Other sites permanently reserved	n.p.	n.p.	6	268	6	274	109	14	123
Employment (persons)	n.p.	n.p.	27	50	18	68	43	51	94
SITE NIGHTS OCCUPIED									
<i>December quarter 1993</i>	<i>6,843</i>	<i>1,174</i>	<i>8,017</i>	<i>48,237</i>	<i>10,684</i>	<i>58,921</i>	<i>30,829</i>	<i>82,997</i>	<i>113,826</i>
<i>1994—</i>									
October	n.p.	n.p.	2,808	15,579	3,767	19,346	11,608	29,005	40,613
November	n.p.	n.p.	1,948	13,289	3,243	16,532	9,657	26,116	35,773
December	n.p.	n.p.	1,783	15,850	3,265	19,115	12,069	26,467	38,536
<i>December quarter 1994</i>	<i>n.p.</i>	<i>n.p.</i>	<i>6,539</i>	<i>44,718</i>	<i>10,275</i>	<i>54,993</i>	<i>33,334</i>	<i>81,588</i>	<i>114,922</i>
SITE OCCUPANCY RATES (per cent)									
<i>December quarter 1993</i>	<i>18.7</i>	<i>13.2</i>	<i>17.6</i>	<i>39.3</i>	<i>28.5</i>	<i>36.8</i>	<i>34.5</i>	<i>62.8</i>	<i>51.4</i>
<i>1994—</i>									
October	n.p.	n.p.	18.2	37.8	29.5	35.8	37.4	67.4	54.8
November	n.p.	n.p.	13.0	33.3	26.2	31.6	32.1	62.7	49.9
December	n.p.	n.p.	11.5	38.4	25.6	35.4	38.9	61.5	52.0
<i>December quarter 1994</i>	<i>n.p.</i>	<i>n.p.</i>	<i>14.2</i>	<i>36.5</i>	<i>27.1</i>	<i>34.3</i>	<i>36.2</i>	<i>63.8</i>	<i>52.2</i>
GUEST ARRIVALS									
<i>December quarter 1993</i>	<i>4,856</i>	<i>517</i>	<i>5,373</i>	<i>19,827</i>	<i>1,795</i>	<i>21,622</i>	<i>16,592</i>	<i>10,573</i>	<i>27,165</i>
<i>1994—</i>									
October	n.p.	n.p.	2,952	6,111	1,065	7,176	6,355	5,001	11,356
November	n.p.	n.p.	1,490	4,230	450	4,680	3,901	3,552	7,453
December	n.p.	n.p.	1,480	6,520	469	6,989	6,551	3,496	10,047
<i>December quarter 1994</i>	<i>n.p.</i>	<i>n.p.</i>	<i>5,922</i>	<i>16,861</i>	<i>1,984</i>	<i>18,845</i>	<i>16,807</i>	<i>12,049</i>	<i>28,856</i>
TAKINGS FROM ACCOMMODATION (\$'000)									
<i>December quarter 1993</i>	<i>94</i>	<i>10</i>	<i>104</i>	<i>324</i>	<i>90</i>	<i>413</i>	<i>348</i>	<i>1,018</i>	<i>1,366</i>
<i>1994—</i>									
October	n.p.	n.p.	37	127	35	162	141	364	505
November	n.p.	n.p.	19	95	28	123	114	345	459
December	n.p.	n.p.	20	138	27	165	150	326	476
<i>December quarter 1994</i>	<i>n.p.</i>	<i>n.p.</i>	<i>75</i>	<i>360</i>	<i>90</i>	<i>450</i>	<i>405</i>	<i>1,034</i>	<i>1,439</i>

TABLE 11 — CARAVAN PARKS BY STATISTICAL DIVISION, WESTERN AUSTRALIA—continued

Particulars	Central (SD)			Pilbara (SD) and Kimberley (SD)			Western Australia		
	Short-term	Long-term	Total	Short-term	Long-term	Total	Short-term	Long-term	Total
ESTABLISHMENTS, CAPACITY AND EMPLOYMENT									
<i>December quarter 1993—</i>									
Establishments	44	10	54	25	15	40	199	113	312
Capacity									
On-site vans	298	122	420	102	162	264	1,167	1,070	2,237
Other powered sites	2,891	705	3,596	1,600	1,589	3,189	11,657	7,391	19,048
Unpowered sites	705	233	938	902	383	1,285	4,005	1,900	5,905
Cabins, flats, etc.	312	38	350	89	68	157	838	564	1,402
<i>Total capacity</i>	<i>4,206</i>	<i>1,098</i>	<i>5,304</i>	<i>2,693</i>	<i>2,202</i>	<i>4,895</i>	<i>17,667</i>	<i>10,925</i>	<i>28,592</i>
Sites occupied by long-term guests	242	237	479	189	472	661	1,175	3,698	4,873
Other sites permanently reserved	135	26	161	2	5	7	1,974	259	2,233
Employment (persons)	184	41	225	92	71	163	696	388	1,084
<i>December quarter 1994—</i>									
Establishments	44	11	55	27	15	42	207	108	315
Capacity									
On-site vans	291	128	419	102	183	285	1,122	1,173	2,295
Other powered sites	3,123	793	3,916	1,877	1,466	3,343	12,324	7,309	19,633
Unpowered sites	626	283	909	843	385	1,228	4,039	2,114	6,153
Cabins, flats, etc.	323	47	370	141	79	220	971	573	1,544
<i>Total capacity</i>	<i>4,363</i>	<i>1,251</i>	<i>5,614</i>	<i>2,963</i>	<i>2,113</i>	<i>5,076</i>	<i>18,456</i>	<i>11,169</i>	<i>29,625</i>
Sites occupied by long-term guests	231	217	448	256	410	666	1,224	3,733	4,957
Other sites permanently reserved	166	26	192	6	15	21	2,116	189	2,305
Employment (persons)	178	44	222	101	65	166	729	393	1,122
SITE NIGHTS OCCUPIED									
<i>December quarter 1993</i>	<i>99,917</i>	<i>32,863</i>	<i>132,780</i>	<i>37,531</i>	<i>59,782</i>	<i>97,313</i>	<i>514,501</i>	<i>447,835</i>	<i>962,336</i>
<i>1994</i>									
October	43,056	12,858	55,914	21,876	21,508	43,384	191,337	162,615	353,952
November	27,731	9,932	37,663	16,636	17,681	34,317	160,309	146,430	306,739
December	29,614	11,127	40,741	12,609	15,559	28,168	188,227	154,354	342,581
<i>December quarter 1994</i>	<i>100,401</i>	<i>33,917</i>	<i>134,318</i>	<i>51,121</i>	<i>54,748</i>	<i>105,869</i>	<i>539,873</i>	<i>463,399</i>	<i>1,003,272</i>
SITE OCCUPANCY RATES (per cent)									
<i>December quarter 1993</i>	<i>25.8</i>	<i>32.5</i>	<i>27.2</i>	<i>15.1</i>	<i>29.5</i>	<i>21.6</i>	<i>31.7</i>	<i>44.6</i>	<i>36.6</i>
<i>1994—</i>									
October	31.8	33.2	32.1	23.8	32.8	27.6	33.4	47.0	38.5
November	21.2	26.5	22.4	18.7	27.9	22.5	29.0	43.7	34.5
December	21.9	28.7	23.4	13.7	23.8	17.9	32.9	44.6	37.3
<i>December quarter 1994</i>	<i>25.0</i>	<i>29.5</i>	<i>26.0</i>	<i>18.8</i>	<i>28.2</i>	<i>22.7</i>	<i>31.8</i>	<i>45.1</i>	<i>36.8</i>
GUEST ARRIVALS									
<i>December quarter 1993</i>	<i>62,635</i>	<i>8,414</i>	<i>71,049</i>	<i>16,727</i>	<i>7,856</i>	<i>24,583</i>	<i>210,022</i>	<i>49,840</i>	<i>259,862</i>
<i>1994—</i>									
October	26,209	4,529	30,738	10,503	4,311	14,814	83,345	23,966	107,311
November	12,989	2,261	15,250	5,026	2,435	7,461	52,761	15,598	68,359
December	14,757	2,932	17,689	3,136	1,540	4,676	81,014	19,026	100,040
<i>December quarter 1994</i>	<i>53,955</i>	<i>9,722</i>	<i>63,677</i>	<i>18,665</i>	<i>8,286</i>	<i>26,951</i>	<i>217,120</i>	<i>58,590</i>	<i>275,710</i>
TAKINGS FROM ACCOMMODATION (\$'000)									
<i>December quarter 1993</i>	<i>1,532</i>	<i>339</i>	<i>1,870</i>	<i>508</i>	<i>744</i>	<i>1,252</i>	<i>5,796</i>	<i>5,245</i>	<i>11,041</i>
<i>1994—</i>									
October	696	135	832	280	320	600	2,224	1,924	4,148
November	413	103	516	204	256	459	1,718	1,743	3,462
December	495	116	610	155	204	359	2,539	1,840	4,379
<i>December quarter 1994</i>	<i>1,604</i>	<i>354</i>	<i>1,958</i>	<i>638</i>	<i>780</i>	<i>1,419</i>	<i>6,481</i>	<i>5,508</i>	<i>11,989</i>

TABLE 12 — VISITOR HOSTELS BY STATISTICAL DIVISION, WESTERN AUSTRALIA

<i>Particulars</i>	<i>Perth (SD)</i>	<i>South-West (SD)</i>	<i>Central (SD)</i>	<i>Kimberley (SD)</i>	<i>Balance of State</i>	<i>Western Australia</i>
ESTABLISHMENTS, CAPACITY AND EMPLOYMENT						
<i>December quarter 1993—</i>						
Establishments	18	11	7	7	11	54
Bed spaces	1,177	488	348	355	625	2,993
Employment (persons)	65	19	11	18	25	138
<i>December quarter 1994—</i>						
Establishments	18	11	8	6	12	55
Bed spaces	988	513	432	326	599	2,858
Employment (persons)	67	21	15	19	26	148
GUEST NIGHTS						
<i>December quarter 1993</i>	<i>61,214</i>	<i>9,918</i>	<i>9,884</i>	<i>13,781</i>	<i>8,983</i>	<i>103,780</i>
<i>1994—</i>						
October	17,090	2,653	4,862	5,389	4,242	34,236
November	18,058	3,498	4,398	4,218	4,608	34,780
December	20,502	4,628	3,834	2,972	4,911	36,847
<i>December quarter 1994</i>	<i>55,650</i>	<i>10,779</i>	<i>13,094</i>	<i>12,579</i>	<i>13,761</i>	<i>105,863</i>
BED OCCUPANCY RATES (per cent)						
<i>December quarter 1993</i>	<i>56.5</i>	<i>22.1</i>	<i>30.9</i>	<i>42.5</i>	<i>15.6</i>	<i>37.7</i>
<i>1994—</i>						
October	55.8	16.7	36.3	53.3	22.8	38.6
November	60.9	22.7	33.9	43.1	25.6	40.6
December	66.9	29.1	28.6	29.4	26.4	41.6
<i>December quarter 1994</i>	<i>61.2</i>	<i>22.8</i>	<i>32.9</i>	<i>41.9</i>	<i>25.0</i>	<i>40.3</i>
GUEST ARRIVALS						
<i>December quarter 1993</i>	<i>18,647</i>	<i>5,948</i>	<i>3,970</i>	<i>3,536</i>	<i>5,780</i>	<i>37,881</i>
<i>1994—</i>						
October	5,287	1,454	1,862	1,386	2,347	12,336
November	5,916	1,746	1,535	1,315	2,485	12,997
December	7,988	2,051	1,243	872	2,624	14,778
<i>December quarter 1994</i>	<i>19,191</i>	<i>5,251</i>	<i>4,640</i>	<i>3,573</i>	<i>7,456</i>	<i>40,111</i>
AVERAGE LENGTH OF STAY (days)						
<i>December quarter 1993</i>	<i>3.3</i>	<i>1.7</i>	<i>2.5</i>	<i>3.9</i>	<i>1.6</i>	<i>2.7</i>
<i>1994—</i>						
October	3.2	1.8	2.6	3.9	1.8	2.8
November	3.1	2.0	2.9	3.2	1.9	2.7
December	2.6	2.3	3.1	3.4	1.9	2.5
<i>December quarter 1994</i>	<i>2.9</i>	<i>2.1</i>	<i>2.8</i>	<i>3.5</i>	<i>1.8</i>	<i>2.6</i>
TAKINGS FROM ACCOMMODATION (\$'000)						
<i>December quarter 1993</i>	<i>641</i>	<i>99</i>	<i>102</i>	<i>155</i>	<i>76</i>	<i>1,073</i>
<i>1994</i>						
October	196	28	50	65	42	380
November	210	37	48	52	44	391
December	240	46	40	36	50	412
<i>December quarter 1994</i>	<i>645</i>	<i>112</i>	<i>138</i>	<i>153</i>	<i>135</i>	<i>1,183</i>

EXPLANATORY NOTES

- *****
- INTRODUCTION** 1 This publication contains data for Western Australia from a quarterly survey of tourist accommodation establishments. The period covered by the latest survey is the 3 months ended 31 December 1994.
- SCOPE** 2 Tourist accommodation establishments currently included in the survey comprise two groups:
- Establishments which provide predominantly short-term accommodation (i.e. for periods of less than 2 months) to the general public. These include:
 - Hotels, motels and guest houses, with facilities* being hotels licensed to operate a public bar and motels, private hotels and guest houses all of which provide a bath (or shower) and toilet in most guest rooms and have breakfast available for guests.
 - Hotels and guest houses, without facilities* which do not provide a bath (or shower) and toilet in most guest rooms but do have breakfast available to guests.
- NOTE: From December quarter 1993, hotel, motel and guest house establishments with fewer than five rooms have been formally excluded from the scope of this statistical collection. This change in scope resulted in the exclusion of four establishments which in the September quarter 1993 Survey aggregates for Western Australia represented 0.9 per cent of hotel, motel and guest house establishments but accounted for less than 0.1 per cent of accommodation capacity, occupancy and takings respectively.
- Holiday flats, units and houses* (excluding establishments predominantly operated on a time share basis) which are operated by owners or managers who have sole letting rights to at least five flats, units or houses or by real estate agents for short-term letting. They are mainly self-contained in terms of cooking, bath (or shower) and toilet facilities and do not have breakfast available for guests. Data for holiday flats, units and houses include short-term owner occupation as well as paying guest occupation.
 - Visitor hostels* which provide accommodation to visitors on a bed basis (rather than by the room). This category does not include establishments providing charity type accommodation (e.g. Salvation Army hostels) nor hotels, motels and guest houses without in-room facilities which provide accommodation on a per room basis.
- *Caravan parks* which provide either predominantly short-term (i.e. for periods of less than 2 months) or predominantly long-term (i.e. for periods of 2 months or more) accommodation to the general public and which provide powered sites for caravans and toilet, shower and laundry facilities for guests.
- 3 Data collected and published for each type of establishment (other than holiday flats, units and houses) include both long-term and short-term guests at these establishments.
- 4 Establishments which provide more than one type of accommodation (e.g. a motel with attached caravan park) are treated as two or more separate establishments. However, self-contained units, flats, cabins, etc. attached to hotels, motels or to caravan parks are included in the capacity for those establishments and not treated as separate holiday flat, unit or house establishments.
- DEFINITIONS**
- 5 *Number of establishments.* For hotels, motels and guest houses, caravan parks and visitor hostels, the number of establishments within the scope of the survey which operated for any part of the survey period, or which closed temporarily for the quarter for seasonal reasons.
- 6 *Number of letting entities.* For holiday flats, units and houses, the number of owners, managers or real estate agents within the scope of the survey who operated for any part of the survey period.
- 7 Capacity in terms of *Guest rooms, Bed spaces, Holiday units or Caravan park sites, etc.* is the maximum number available to accommodate paying guests during the survey period. Capacity closed temporarily for seasonal reasons is included.
- 8 *Bed spaces.* Three-quarter beds are counted as one bed space; double beds as two bed spaces. Cots are excluded.

EXPLANATORY NOTES—continued

DEFINITIONS continued

9 *Total caravan park capacity* comprises *On-site vans, Other powered sites, Unpowered sites and Cabins, etc.*

10 *Room nights available.* The number of guest rooms available multiplied by the number of days for which they were available during the survey period. Includes operating periods only for establishments closing (other than for seasonal reasons) or opening during the survey period.

11 Occupancy in terms of *Room nights, Unit nights or Site nights occupied* refers to the total number of nights each guest room, holiday unit or caravan park site, etc. was occupied during the survey period.

NOTE: From September quarter 1992, caravan park sites, etc. permanently reserved for 2 months or more at the end of the survey period but only casually occupied by their tenants have been recorded continuously as *Site nights occupied* irrespective of whether the tenants of individual sites were in residence on any particular night. (See also paragraph 14 below). Previously, usage of these sites was recorded as *Site nights occupied* only when their tenants were in the park. Total site occupancy rates from September quarter 1992 are therefore not comparable with those from previous quarters.

12 Occupancy in terms of *Guest nights* refers to the total number of nights each paying guest stayed during the survey period.

13 *Sites occupied by long-term guests.* The total number of sites, etc. occupied at the end of the survey period by guests who have stayed continuously for 2 months or more.

14 *Other sites permanently reserved.* The total number of powered and unpowered sites, on-site vans and cabins, etc. continuously let for 2 months or more by the end of the survey period to tenants who occupy the sites only on a casual or sporadic basis. Separate data for this item are available only from September quarter 1992.

15 *Occupancy rates* represent occupancy expressed as a percentage of total capacity available during the survey period – e.g.

$$\text{Room occupancy rate (\%)} \text{ for the period} = \frac{\text{Room nights occupied}}{(\text{Guest rooms}) \times (\text{No. of days in the period})} \times 100$$

providing that, for establishments closing (other than for seasonal reasons) or opening during the period, the denominator of the above expression includes only operating periods.

16 *Guest arrivals.* The total number of paying guests counted only on the first night they stayed at the accommodation establishment.

17 *Unit lettings.* The total number of times a holiday flat, unit or house was occupied by a new tenant, counted only on the first night it was occupied by the new tenant.

18 *Average length of stay* is expressed in number of days and is calculated:

- for hotels, motels and guest houses and for visitor hostels, by dividing *Guest nights* by *Guest arrivals* and
- for holiday flats, units and houses, by dividing *Unit nights occupied* by *Unit lettings*.

19 *Takings from accommodation.* Revenue received from the provision of accommodation. Takings from meals are excluded. Takings from accommodation for each month generally represent the takings received during that month. Where payments are received in advance of, or after, the provision of accommodation to guests, the monthly figure for takings from accommodation may not necessarily bear a direct relationship to the number of guests accommodated during the month. Rental and storage fees paid to caravan parks for the keeping of private vans in parks are included in the takings of the month they are received.

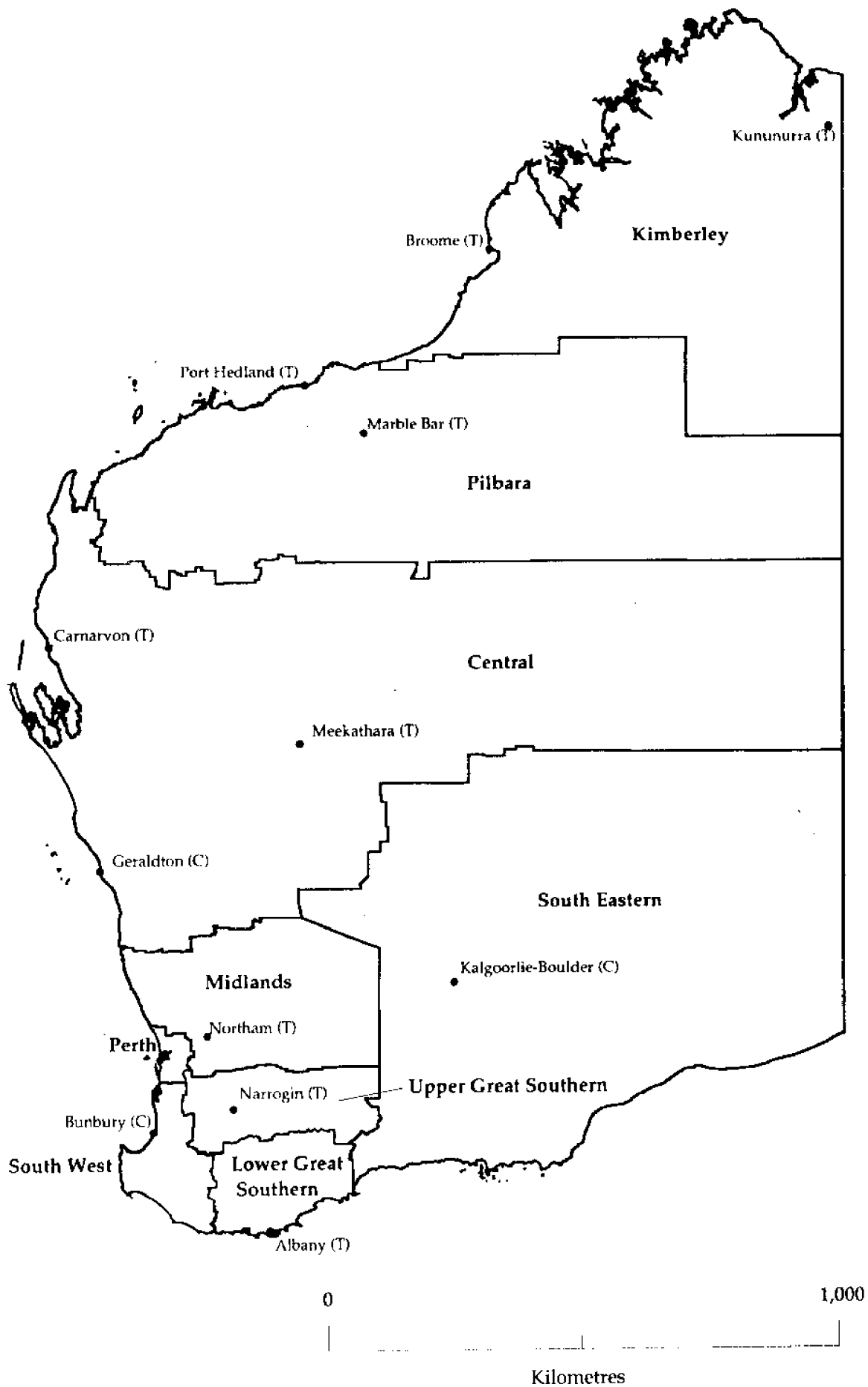
20 *Star grading.* The grading of hotels and motels with facilities based on the classification system used by members of the Australian Automobile Association (AAA). The gradings are allocated according to a points system based on the amenities and facilities available to guests. Details of the grading scheme are contained in the

EXPLANATORY NOTES—continued

DEFINITIONS—continued	<p>RACV-RAASA members' publication <i>Accommodation Australia</i>, or the individual tour guides produced by members of the AAA. For the purpose of classifying establishments to a star grading in this publication, 'half' star gradings are ignored (e.g. a two and a half star grading has been shown as two star).</p> <p>21 <i>Employment.</i> The number of persons working at accommodation establishments at the end of the survey period (including working proprietors and those working on other than accommodation activities).</p>
AUSTRALIAN STANDARD GEOGRAPHICAL CLASSIFICATION	<p>22 Statistics presented in this publication have been classified according to the Australian Standard Geographical Classification (ASGC), Edition 2.4. This classification incorporates a number of hierarchic structures of geographic areas. The appropriate spatial units of the main structure of the ASGC used in this publication are defined as follows.</p> <p><i>Statistical Local Areas (SLAs)</i> are the smallest areas for which tourist accommodation data are presented. They are directly comparable with legal Local Government Areas except for the Cities of Perth, Fremantle and Stirling which are obtained by aggregating component Statistical Local Areas.</p> <p><i>Statistical Subdivisions (SSDs).</i> These consist of one or more SLAs and form the intermediate size spatial unit for the presentation of regional data.</p> <p><i>Statistical Divisions (SDs).</i> These consist of one or more SSDs. The divisions are designed to be relatively homogeneous regions characterised by identifiable social and economic units within the region, under the unifying influence of one or more major towns or cities.</p> <p>For more detailed information, refer to the ASGC (1216.0).</p>
UNPUBLISHED STATISTICS	<p>23 The ABS may make available on request certain unpublished tourist accommodation statistics. A charge may be made for this information.</p>
RELATED PUBLICATIONS	<p>24 Publications for Australia, and each State and Territory, are released by the respective offices of the ABS. Tourist accommodation statistics for past quarters are available on request.</p> <p>25 Other ABS publications which may be of interest include:</p> <p style="padding-left: 2em;"><i>Directory of Tourism Statistics</i> (1130.0) (irregular: first and latest issue; 1991)</p> <p style="padding-left: 2em;"><i>Overseas Arrivals and Departures, Australia</i> (3401.0) (monthly)</p> <p style="padding-left: 2em;"><i>Tourism Indicators Australia</i> (8634.0) (quarterly)</p> <p style="padding-left: 2em;"><i>Tourist Accommodation, Australia</i> (8635.0) (quarterly)</p> <p>26 Current publications produced by the ABS are listed in the <i>Catalogue of Publications and Products</i> (1101.0). The ABS also issues the <i>Publications Advice</i> (1105.0) on Tuesdays and Fridays which lists publications to be released in the next few days. Both the Catalogue and <i>Publications Advice</i> are available from any ABS office.</p>
SYMBOLS AND OTHER USAGES	<p>n.a. not available</p> <p>n.p. not available for publication but included in totals where applicable</p> <p>r figure or series revised since previous issue</p> <p>.. not applicable</p> <p>— nil or rounded to zero</p> <p>(C) City</p> <p>(T) Town</p> <p>(S) Shire</p> <p>27 Where figures have been rounded, discrepancies may occur between totals and the sums of the component items.</p>

P. C. KELLY
Deputy Commonwealth Statistician
and Government Statistician

STATISTICAL DIVISIONS, WESTERN AUSTRALIA





For more information...

The ABS publishes a wide range of information on Australia's economic and social conditions. Details are available in the *Catalogue of Publications and Products* is available from any of our Offices (see below for contact details).

Information Consultancy

Information tailored to special needs of clients or in-depth data investigations are provided by the ABS Information Consultancy Services in each of our Offices (available via the contacts below).

National Dial-a-Statistic Line

0055 86 400

(Steadycom P/L premium rate 25c/21.4 secs.)

This number gives 24 hours access, 365 days a year for a range of statistics.

Electronic Data Services

A growing range of our data is available on electronic media. Our Telestats service delivers major economic publications ready to download into your computer on the day of release. Our Ausstats service enables on-line access to a data base of thousands of up-to-date time series. Selected datasets are also available on diskette or CD-rom. For more details on our electronic services, contact Information Services in any of our Offices on the numbers below.

Bookshops and Subscriptions

There are now over 500 titles available from the ABS Bookshops in each of our Offices. The ABS also provides a subscription mailing service through which nominated publications are provided by mail at no additional cost. (Telephone Publications Subscription Service toll free on 008 02 0608 Australia wide).

Sales and Inquiries

Regional Offices

SYDNEY

MELBOURNE

BRISBANE

PERTH

ADELAIDE

HOBART

CANBERRA

DARWIN

Information Enquiries

(02) 268 4611

(03) 615 7000

(07) 222 6531

(09) 360 5140

(08) 237 7100

(002) 20 5800

(06) 207 0326

(089) 43 2111

Bookshop Sales

268 4620

615 7829

222 6350

360 5140

237 7582

20 5800

207 0326

43 2111

National Office

ACT

(06) 252 6007

008 020 608



Information Services, Exchange Plaza,
2 The Esplanade, Perth WA 6000.
or any ABS Office

